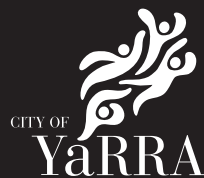


# Attachment 1

## Final Concept Plan

### Charlotte Street Pocket Park

November 2023





# Final concept plan + elevations + view

The feedback from the community on the draft concept plan was overwhelmingly positive and supportive and we have modified the design in response to your feedback and comments.

The design for the pocket park aims to maximise greenery and tree planting while creating a space that reflects the setting next to the library building and respects the heritage nature of the adjacent buildings.

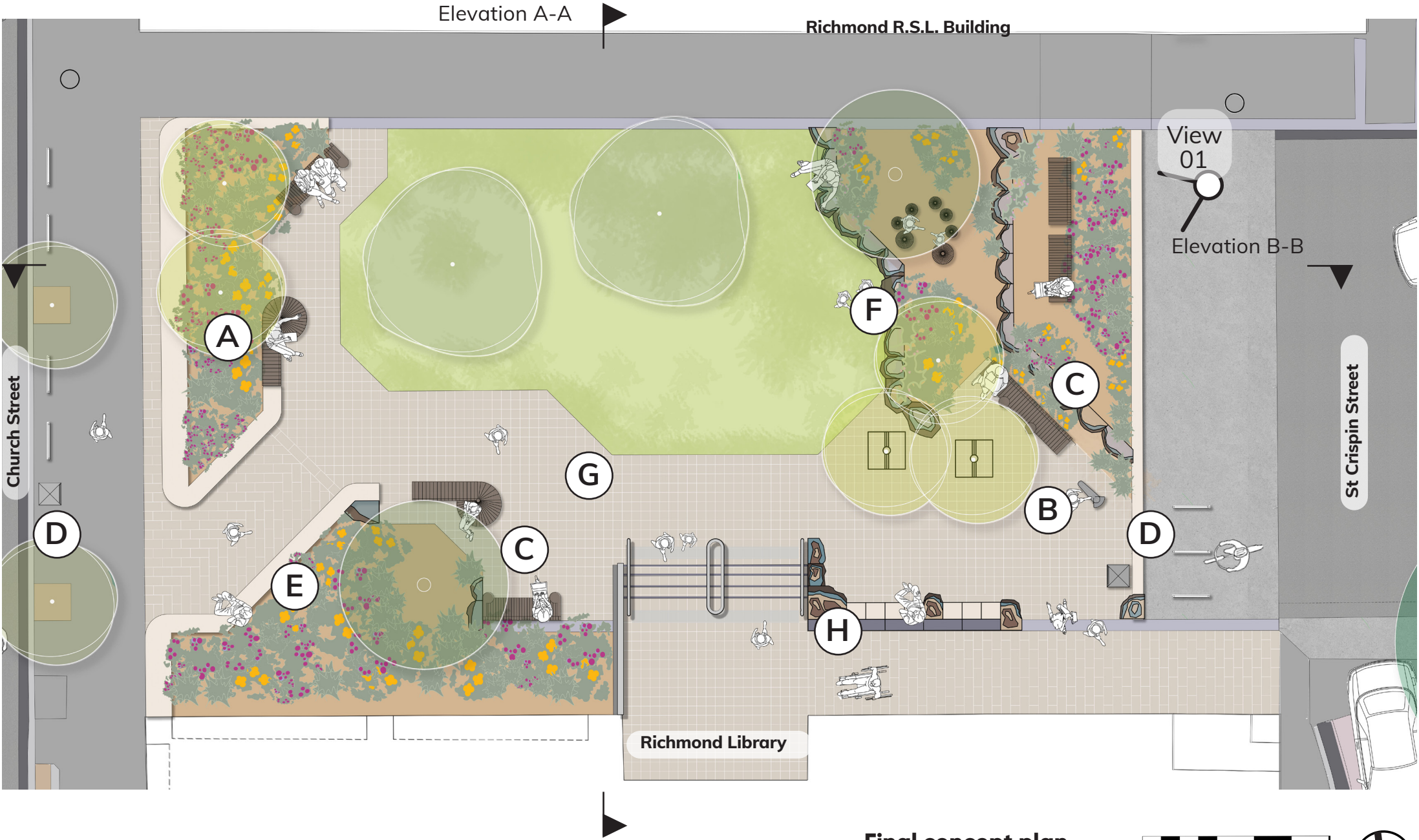
## Main changes from draft concept plan to final concept

Final concept plan response to the Stage 2 community consultation feedback:

- A. Widened landscape buffer along Church Street to further separate the park from the street, noting that sight-lines and visual connection between the street and the park are not obstructed.
- B. A drinking fountain with a dog bowl will be located in the park.
- C. Bench seats in key locations will have back and armrests and the will also integrating small cafe style tables.
- D. Bins will be located on either end of the park.
- E. Bike hoops are relocated from the main access path into the park, to be along Church Street for improved accessibility.

Other design modifications include;

- F. Sawn basalt edges have been introduced, to create informal moments and also to address the fall of the land creating informal steps and edges.
- G. Further material investigations are underway to select a light coloured material palette that compliments the existing setting and bluestone kerbs.
- H. A design has been developed for library entrance threshold, to create a better accessible and more open and welcoming entrance that also reflect the design and materiality of the park.



## Legend



Existing Pin Oak trees retained



Proposed tree



Lawn



Garden bed with low flowering plants



Paving, precast concrete unit pavers



Raised edges along Church Street



Flush bluestone edge



Raised bluestone edge, sculptural boulders and integrated seating



Bench seats with back, armrest and integrated small cafe style table



Grouping of circular seats by the existing oak tree



Cut basalt boulders creating informal steps



Feature cut basalt boulders



Bin, indicative locations



Drinking fountain with dog bowl

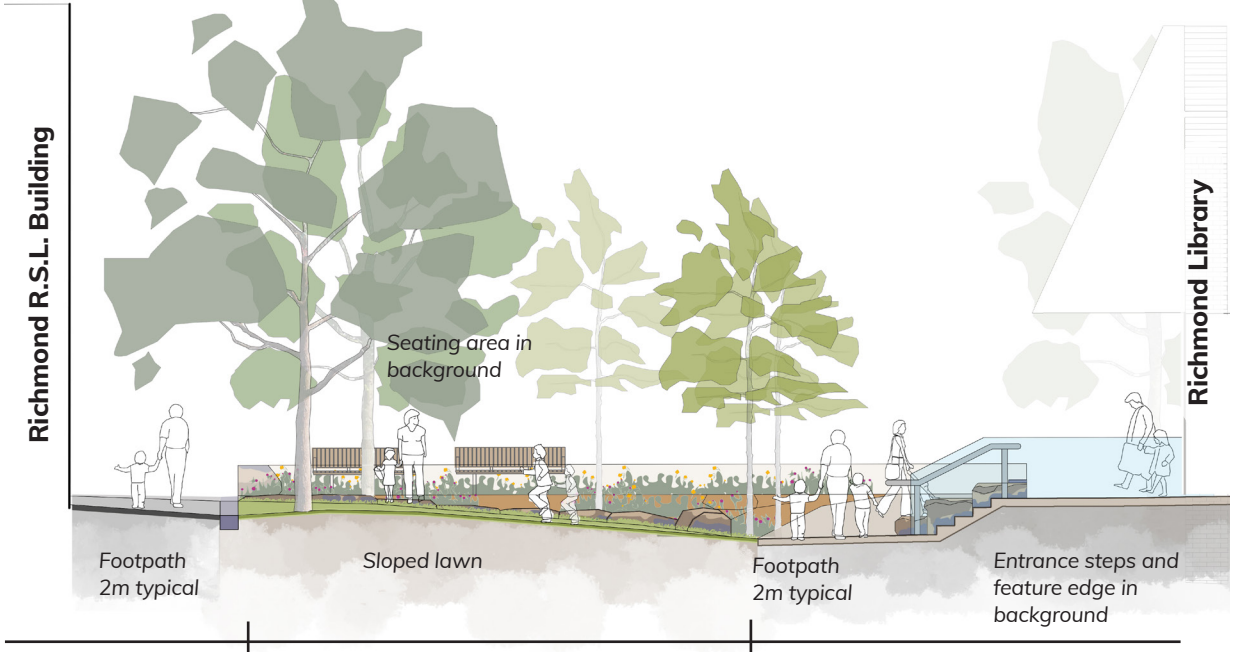


Bike parking including space for cargo bike

Whilst every effort is made to represent the proposed design as accurately as possible, individual design elements are subject to change due to material availability, budget constraints, and latent on-site conditions.



# Elevation A-A

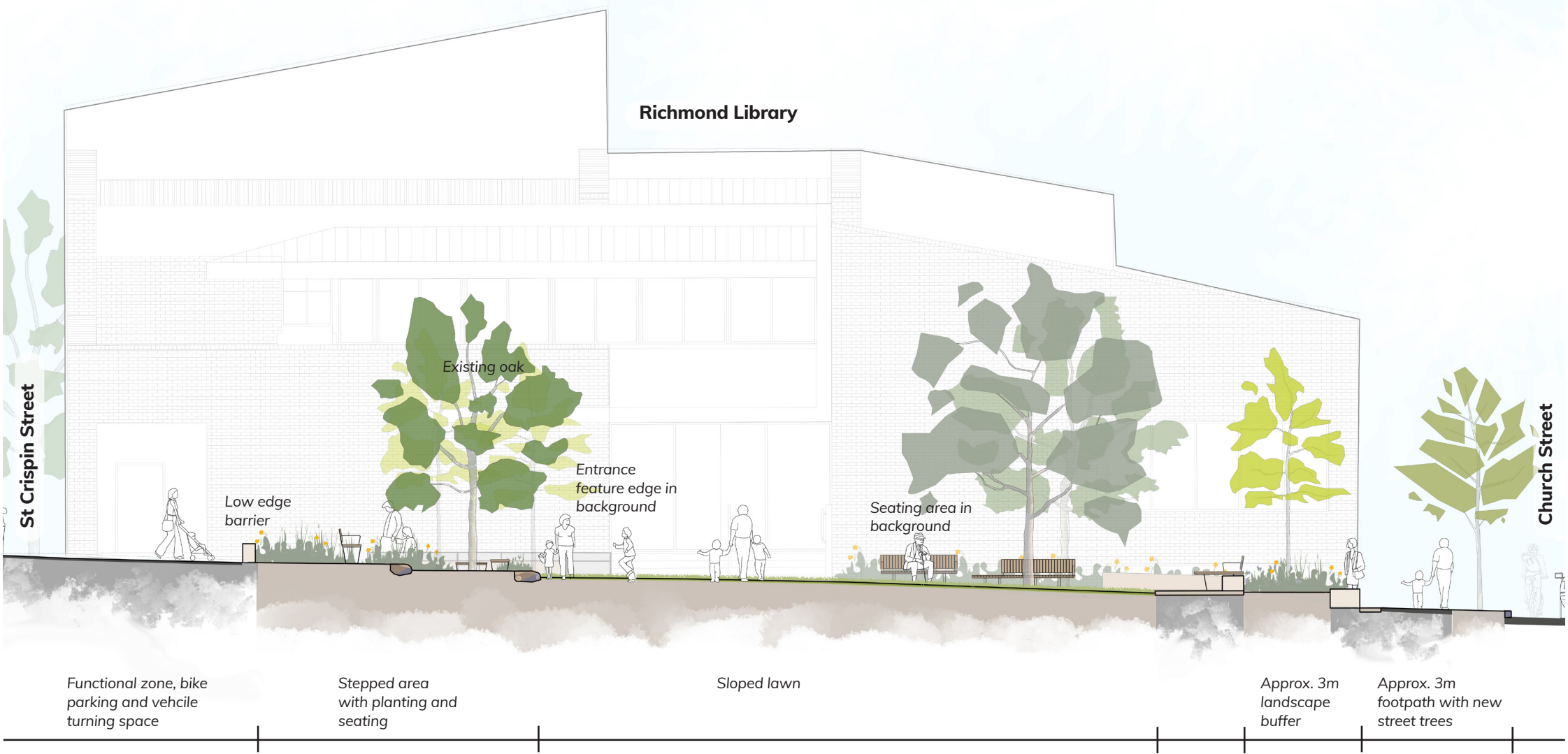


# View 01



Graphics by Fooks Landscape Architecture & Urban Design, December 2023

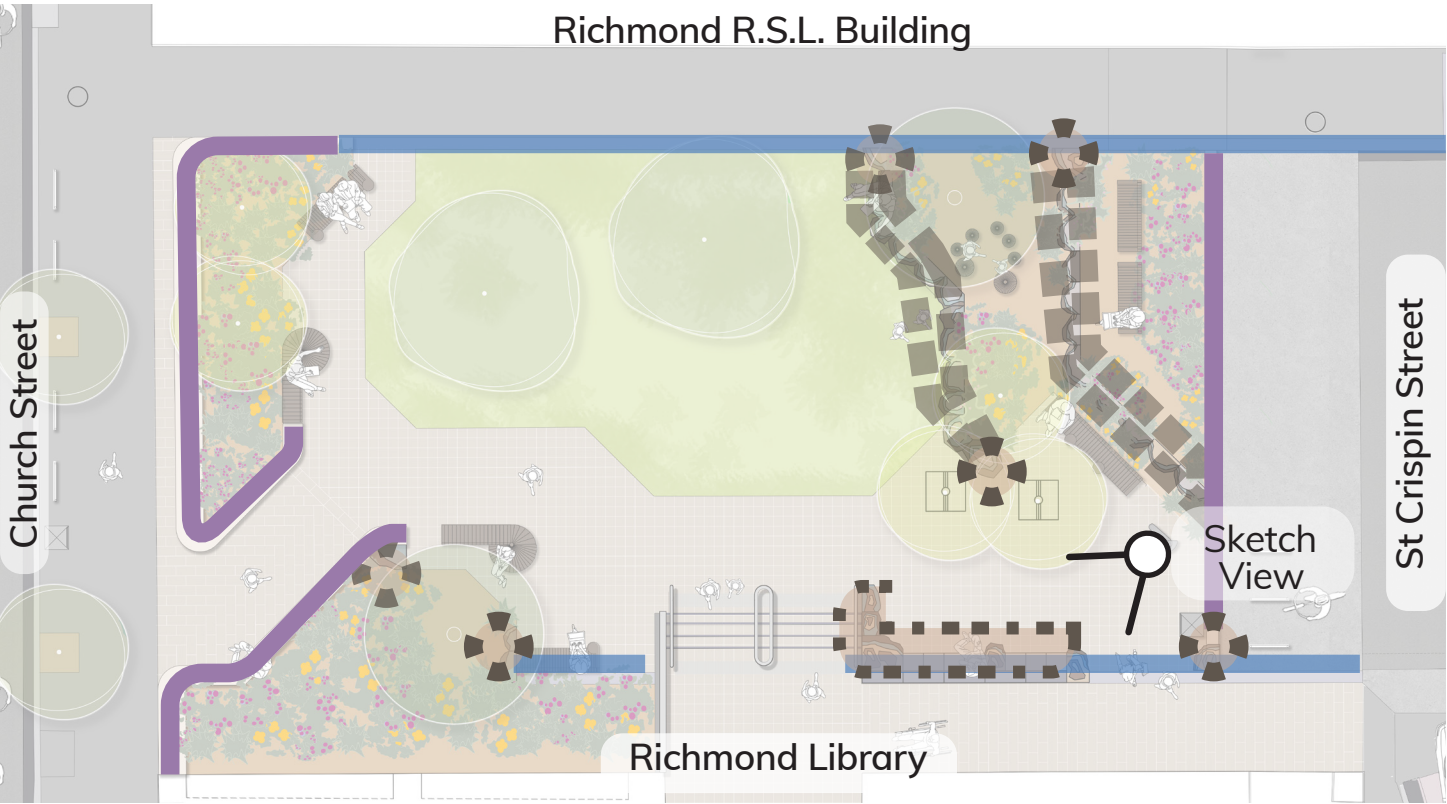
# Elevation B-B



Whilst every effort is made to represent the proposed design as accurately as possible, individual design elements are subject to change due to material availability, budget constraints, and latent on-site conditions.



# Homage to heritage bluestone



Plan diagram showing location for different stone and edge typologies  
Plan not to scale

Legend

Sawn kerb stone following the existing alignment, re-use existing bluestone kerb stones where possible

Sawn boulders, creating informal steps and edges

Feature boulders with sawn, split and natural faces

Insitu and/or precast concrete edges with basalt aggregate

Library entrance threshold feature edge, combination of above listed stone and concrete elements

Precast concrete paving with basalt aggregate



01 Feature Basalt boulders, sawn, cut and natural faces, The University of Melbourne Student Precinct



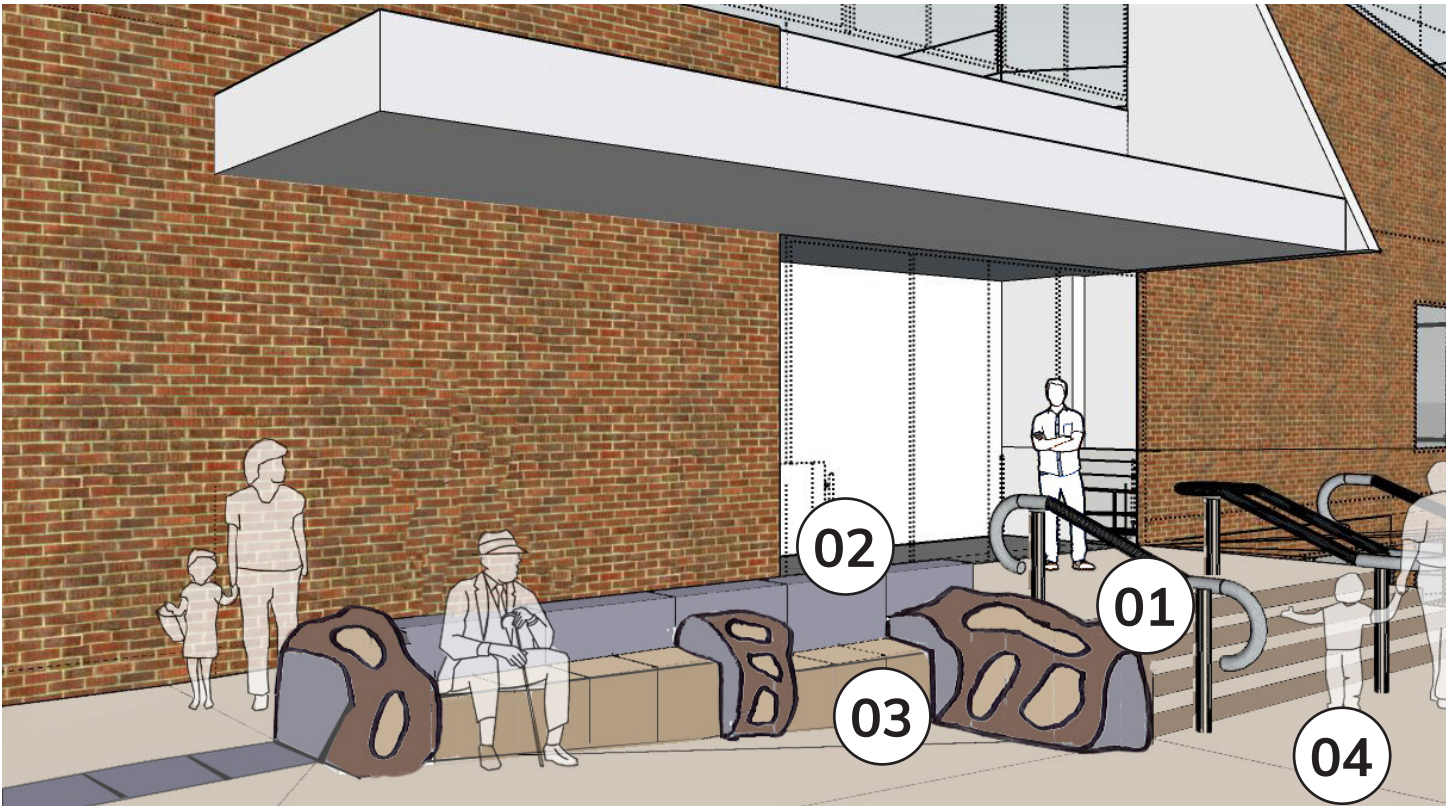
02 Edge, sawn dressed bluestone blocks



03 Seat blocks, precast concrete, with bluestone / basalt aggregate  
Image credit; Landezine.com Shor photo Paul-Mcmillan



04 Precast concrete paving with basalt aggregate



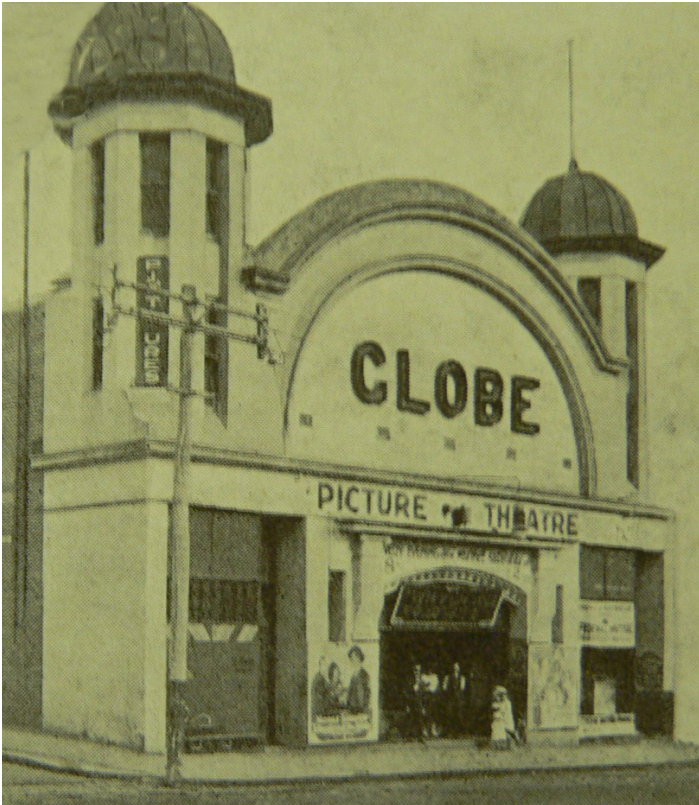
Sketch view, library entrance threshold feature seating edge



# Furniture design inspiration + typology



Aerial of Richmond c 1940, provided by Richmond Historical Society. Charlotte Street and the Globe Theatre where the library now is located.  
*Image credit; Richmond Historical Society*



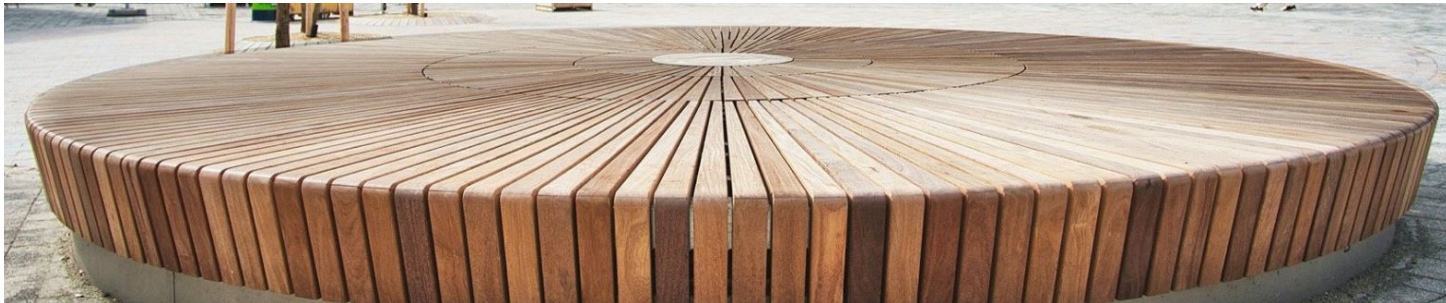
Globe Theatre, original facade  
*Image credit; Richmond Historical Society*



Icon of Swan Street



Feature of Swan Street



Circular feature platform seating element of different sizes  
*Image credit; Landezine.com*



Small cafe style tables, integrated with seat or freestanding  
*Image credit; Draffin.com.au*



Seats back and armrest  
*Image credit; Draffin.com.au*



# Trees + low planting

Trees



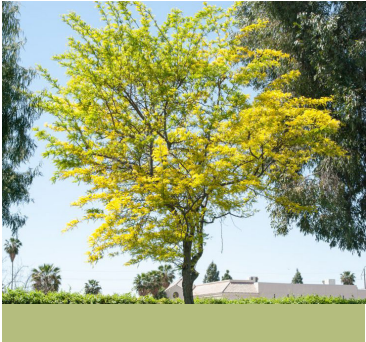
1. *Quercus palustris*  
Pin Oak - (Exotic, Deciduous)



2. *Acer x freemanii*  
'Autumn Blaze' - (Exotic, Deciduous)



3. *Eucalyptus sideroxylon*  
Red Ironbark - (Native, Evergreen)



4. *Gleditsia triacanthos*  
Honey Locust - (Exotic, Deciduous)

Feature



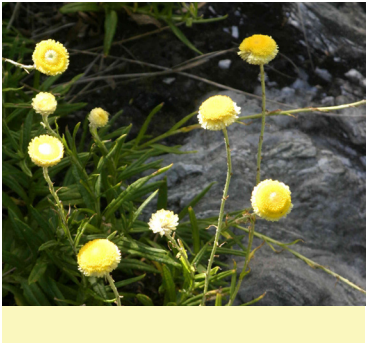
5. *Chrysocephalum apiculatum*  
Common Everlasting



6. *Craspedia paludicola*  
Swamp Billybuttons



7. *Calocephalus citreus*  
Lemon Beauty Heads



8. *Coronidium scorpioides*  
Button Everlasting



9. *Pycnosorus globosus*  
Billy Buttons

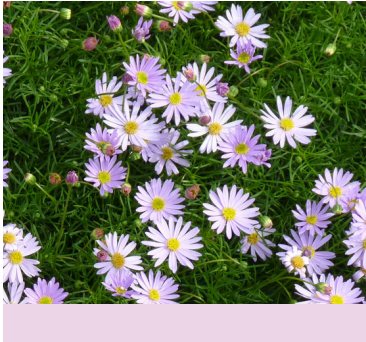
Feature



10. *Hardenbergia violacea*  
Native Sarsparilla



11. *Wahlenbergia stricta*  
Tall Bluebell



12. *Brachyscome multifida*  
Cut-leafed Daisy



13. *Scaevola aemula*  
Fairy Fan-flower



14. *Pelargonium rodneyanum*  
Magenta Storksbill

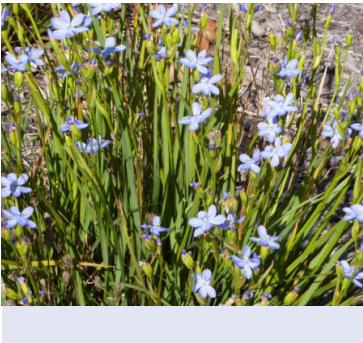


15. *Carpobrotus ssp.*  
Pigface

Structure + backdrop



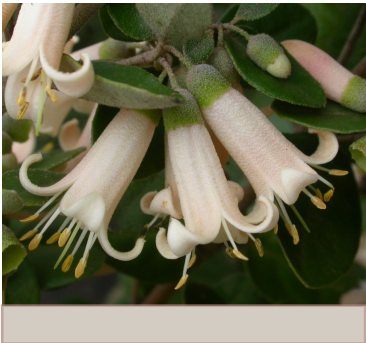
16. *Dianella spp.*  
Flax-lily varieties



17. *Orthrosanthus multiflorus*  
Morning Flag



18. *Austrostipa spp.*  
Spear grass



19. *Correa spp.*  
Correa



20. *Grevillea lanigera*  
Woolly Grevillea



21. *Acacia aculeatissima*  
Snake Wattle

## Image Credits

1. Photographer unknown. "Quercus palustris." Landscape Architect's Pages, 21/10/2013, <https://davisla.wordpress.com/2013/11/01/quercus-palustris/>. Accessed 25/10/2023.

2. Photographer unknown. "Autumn Blaze Maple" Pinterest, <https://www.pinterest.com.au/pin/autumn-blaze-maple-acer-x-freemanii-autumn-blaze--618259855067270040/>. Accessed 25/10/2023.

3. Entwisle, Tim. "Eucalyptus sideroxylon." Talking Plants, 9/9/2020, <https://talkingplants.blogspot.com/2020/09/beauty-and-strength-in-local-park.html>. Accessed 25/10/2023.

4. Perry, Robert . "Honey Locust." Pinterest, <https://www.pinterest.com.au/pin/862861609835440972/>. Accessed 25/10/2023.

5. Lewis McNeice

6. Clarke, Chris. "Swamp Billy-buttons." Grasslands Biodiversity of South-Eastern Australia, <https://grasslands.ecolinc.vic.edu.au/fieldguide/flora/swamp-billy-buttons#details>. Accessed 25/10/2023.

7. Roger, Thomas. "Lemon beauty-heads." The Courier, 17/1/2019, <https://www.thecourier.com.au/story/5854273/native-plant-has-a-vivid-crowning-glory/>. Accessed 25/10/2023.

8. Photographer unknown. "Coronidium scorpioides." Maatsuyker Dreaming, <https://maatsuykerdreaming.wordpress.com/2017/03/14/coronidium-scorpioides-an-everlasting/>. Accessed 25/10/2023.

9. Photographer unknown. "Pycnosorus Globosus." Trigg Plants, <https://triggplants.com.au/product/pycnosorus-globosus-billy-button-in-75mm-supergro-tube/>. Accessed 25/10/2023.

10. Photographer unkown. "Hardenbergia." Yates, <https://www.yates.com.au/how-to-grow/hardenbergia/>. Accessed 8/12/2021.

11. Photographer unkown. "Wahlenbergia stricta." ebay, <https://www.ebay.com.au/itm/363219402262>. Accessed 8/12/2021.

12. Photographer unkown. "Brachyscome Mauve Delight." FlowerPower, <https://www.flowerpower.com.au/brachyscome-mauve-delight-1338450130p>. Accessed 8/12/2021.

13. Photographer unkown. "Scaevola Purple Fanfare." Hello Hello Plants, <https://www.thetutuguru.com.au/shop/scaevola-purple-fanfare-6-pot/>. Accessed 8/12/2021.

14. Clark, Gary. "Magenta Stork's-bill." Grasslands Biodiversity of South-Eastern Australia, <https://grasslands.ecolinc.vic.edu.au/fieldguide/flora/swamp-billy-buttons#details>. Accessed 25/20/2023.

15. Christian Lundh

16. Photographer unkown. "Dianella caerulea." Hello Hello Plants, <https://www.thetutuguru.com.au/shop/dianella-paro-lily/>. Accessed 8/12/2021.

17. Photographer unkown. "Orthrosanthus Multiflorus." Lullfitz Nursery, <https://www.lullfitz.com.au/orthrosanthus-multiflorus>. Accessed 8/12/2021.

18. Photographer unkown. "Prickly Spear Grass." Swan Bay Environment Association, <https://swanbayenvironment.org.au/prickly-spear-grass/>. Accessed 25/10/2023.

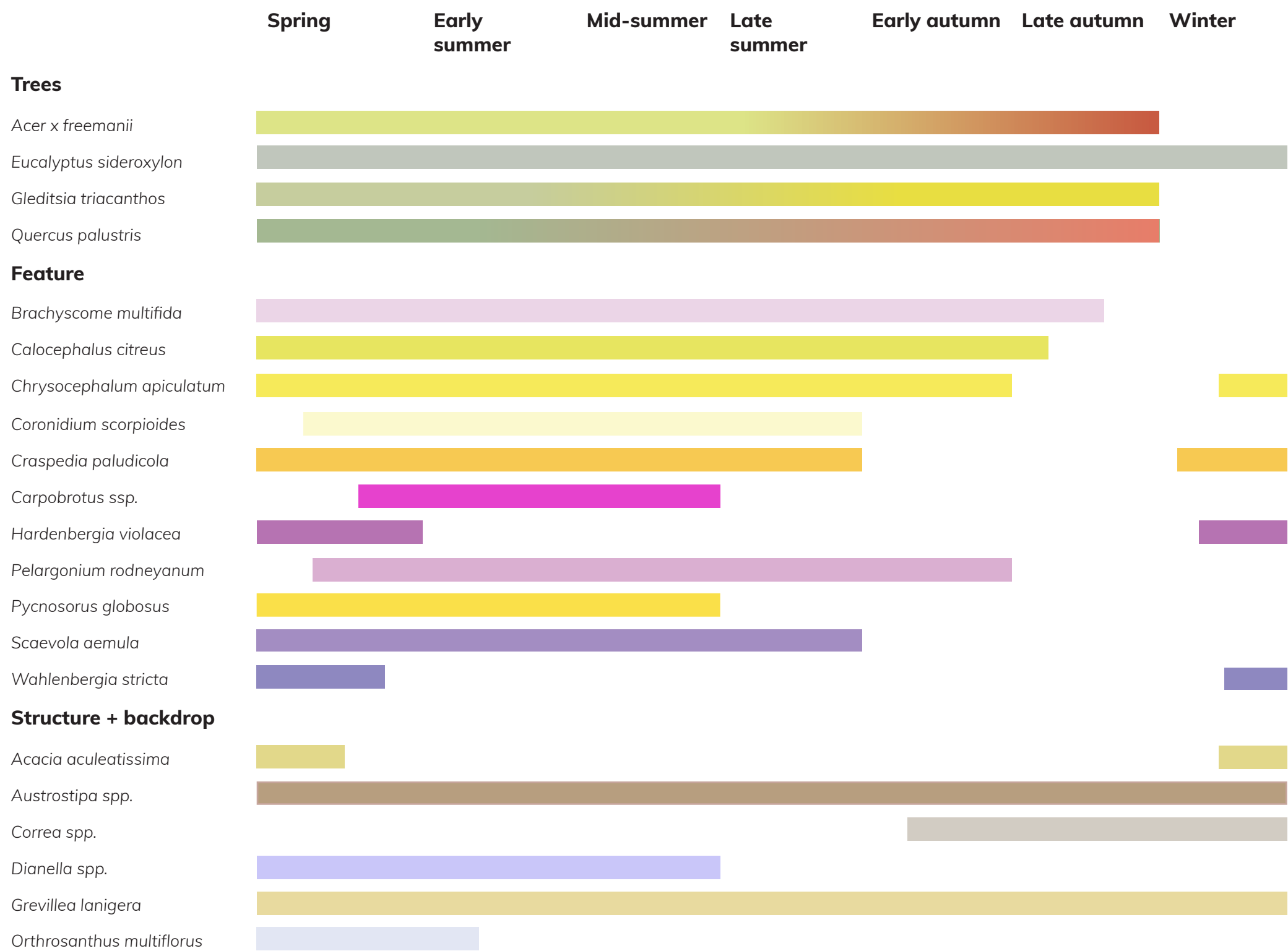
19. Photographer unkown. "Correa Just a Touch." Gardening with Angus, <https://www.gardeningwithangus.com.au/correa-just-a-touch/>. Accessed 25/10/2023.

20. Photographer unkown. "Grevillea lanigera." Gardening with Angus, <https://www.gardeningwithangus.com.au/grevillea-lanigera-woolly-grevillea/>. Accessed 25/10/2023.

21. Photographer unkown. "Acacia aculeatissima." Yarra Ranges Council Local Plant Directory, <https://www.yarraranges.vic.gov.au/PlantDirectory/Herbs-Groundcovers/Acacia-aculeatissima>. Accessed 25/10/2023.



# Seasonal change + flowers



The Charlotte Street Pocket Park is envisioned as a moment of relief in heavily urbanised area. As such, the planting palette has been selected to offer an ever-changing display across the seasons.

Red Ironbarks and Honey Locusts will feature in the site, but also speak to the existing Pin Oaks and Maples. In combination, these trees will create a spectacular foliage display and provide shade over spring and summer, whilst allowing light and sun to penetrate the space during the winter months.

A predominantly native planting palette has been adopted for the Pocket Park to compliment the existing exotic tree species within the site.

The proposed exotic tree species will connect the park design and existing trees with the streetscape, and are suitable complimenting the functionality of the space such as outdoor seating during summer and winter.

The native flowering plants will provide habitat for bees, other pollinators and maximise biodiversity while using native plants in a ornamental way.

Species shown are indicative only and subject to availability. Whilst every effort is made to represent the proposed design as accurately as possible, individual design elements are subject to change due to material availability, budget constraints, and latent on-site conditions.