

Separated waste service charge

Personas



The property value ranges below have been developed to assist our community in identifying how a waste service charge might be applied to different living situations.

These ranges have been developed exclusively to assist navigation of these example 'personas' and are not suited for any other purposes.

Single Unit Dwellings (E.g. a house)

- Low value: \$0 to \$1,200,000
- Medium value: \$1,200,000 to \$1,700,000
- High value: \$1,700,000 and above

Multi Unit Dwelling (E.g. a unit or apartment)

- Low value: \$0 to \$350,000
- Medium value: \$350,000 to \$600,000
- High value: \$600,000 and above

I own a house (high value)



Sandra and Jane live with their three kids in a house they own in Fitzroy North.

Their property is worth \$1,850,000. They receive weekly rubbish and fortnightly recycling and glass bin collections.

Like all residents, they also benefit from other council waste services such as bins in streets and parks, street sweeping, hard waste collections and access to the recycling drop-off centre in Clifton Hill, among others.

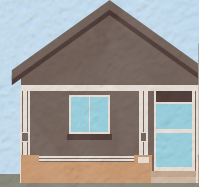
Rates bill without a waste service charge:

- General rates total: \$3,402

Rates bill with a waste service charge:

- General rates: \$2,884
- Public waste rate: \$216
- Kerbside waste rate: \$409
- Total rates: \$3,509

I own a house (medium value)



Laura, Elliot and their 1-year-old child Oliver own a house in Alphington.

The property is worth \$1,500,000. They receive weekly rubbish and fortnightly recycling and glass bin collections.

Like all residents, they also benefit from other council waste services such as bins in streets and parks, street sweeping, hard waste collections and access to the recycling drop-off centre in Clifton Hill, among others.

Rates bill without a waste service charge:

- General rates total: \$2,759

Rates bill with a waste service charge:

- General rates: \$2,339
- Public waste rate: \$175
- Kerbside waste rate: \$332
- Total rates: \$2,846

I am a pensioner and I own a house (medium value)



Elia and Sofia own a town house in Carlton North.

The property is worth \$1,500,000. They receive weekly rubbish and fortnightly recycling and glass bin collections. Elia and Sofia receive a pension rebate, and Council also provides an additional pensioner waiver.

Like all residents, they also benefit from other council waste services such as bins in streets and parks, street sweeping, hard waste collections and access to the recycling drop-off centre in Clifton Hill, among others.

Rates bill without a waste service charge:

- General rates total: \$2,759
- Rebate: \$450
- Total rates: \$2,309

Rates bill with a waste service charge:

- General rates: \$2,339
- Public waste rate: \$175
- Kerbside waste rate: \$332
- Rebate: \$450
- Total rates: \$2,396

I own an apartment or unit (low value) and receive a Council service



Linda, Dev and their cat Taco own an apartment in Collingwood.

Their property is worth \$350,000. They share rubbish, recycling and glass bins with the other residents in their building. Council collects the shared bins on a weekly and fortnightly basis.

Like all residents, they also benefit from other council waste services such as bins in streets and parks, street sweeping, hard waste collections and access to the recycling drop-off centre in Clifton Hill, among others.

Rates bill without a waste service charge:

- General rates total: \$644

Rates bill with a waste service charge:

- General rates: \$546
- Public waste rate: \$41
- Kerbside waste rate: \$77
- Total rates: \$664

I own an apartment or unit (low value) and do not receive a Council service



Jacqui owns an apartment in Richmond.

This property is worth \$350,000. Jacqui shares rubbish, recycling and glass bins with the other residents in their building. The building has a private waste collection service and does not receive a Council service.

Like all residents, Jacqui also benefits from other council waste services such as bins in streets and parks, street sweeping, hard waste collections and access to the recycling drop-off centre in Clifton Hill, among others.

Rates bill without a waste service charge:

- General rates total: \$644

Rates bill with a waste service charge:

- General rates: \$546
- Public waste rate: \$41
- Kerbside waste rate: \$0
- Total rates: \$587

I own an apartment or unit (medium value) and receive a Council service



Shashank owns an apartment in Fitzroy. He lives with his roommate, John.

The property is worth \$500,000. They share rubbish, recycling and glass bins with the other residents in their building. Council collects the shared bins on a weekly and fortnightly basis.

Like all residents, they also benefit from other council waste services such as bins in streets and parks, street sweeping, hard waste collections and access to the recycling drop-off centre in Clifton Hill, among others.

Rates bill without a waste service charge:

- General rates total: \$920

Rates bill with a waste service charge:

- General rates: \$780
- Public waste rate: \$58
- Kerbside waste rate: \$111
- Total rates: \$949

I own an apartment or unit (medium value) and do not receive a Council service



Tina is a single parent who lives with her 7-year-old daughter Jessie. Tina owns an apartment in Clifton Hill.

Their property is worth \$500,000. They share rubbish, recycling and glass bins with the other residents in their building. The building has a private waste collection service and does not receive a Council service.

Like all residents, they also benefit from other council waste services such as bins in streets and parks, street sweeping, hard waste collections and access to the recycling drop-off centre in Clifton Hill, among others.

Rates bill without a waste service charge:

- General rates total: \$920

Rates bill with a waste service charge:

- General rates: \$780
- Public waste rate: \$58
- Kerbside waste rate: \$0
- Total rates: \$838

I own a commercial property and receive a Council service



Tran owns a shopfront property on Victoria Street in Abbotsford worth \$1,200,000. He operates a café out of this property.

Tran receives weekly rubbish and fortnightly recycling and glass bin collections, the same service provided to residential properties. Tran also uses a private waste collection service for additional waste produced by his operation.

Tran benefits from other council waste services such as bins in streets and parks, street sweeping, hard waste collections and access to the recycling drop-off centre in Clifton Hill, among others.

Rates bill without a waste service charge:

- General rates total: \$2,207

Rates bill with a waste service charge:

- General rates: \$1,871
- Public waste rate: \$140
- Kerbside waste rate: \$266
- Total rates: \$2,277

I own a non-rateable property



Not all properties pay council rates. This includes schools, churches and some other facilities.

These non-rateable properties can elect to receive a weekly rubbish, fortnightly recycling and glass bin collections from Council.

They also benefit from other council waste services such as street sweeping, hard waste collections and access to the recycling drop-off centre in Clifton Hill, among others.

The amount non-rateable properties are charged for receiving a council waste service will be determined as a part of the Draft Budget. Please check back here again following the announcement of the Draft Budget 2023/24 for more information.

National Relay Service

TTY 133 677 then (03) 9205 5055

Languages

العربية 9280 1930

中文 9280 1937

Ελληνικά 9280 1934

Italiano 9280 1931

Español 9280 1935

Tiếng Việt 9280 1939

Other 9280 1940