

STATION STREET

TEMPORARY OPTION 1

12 MONTHS TRIAL



WHAT YOU SAID

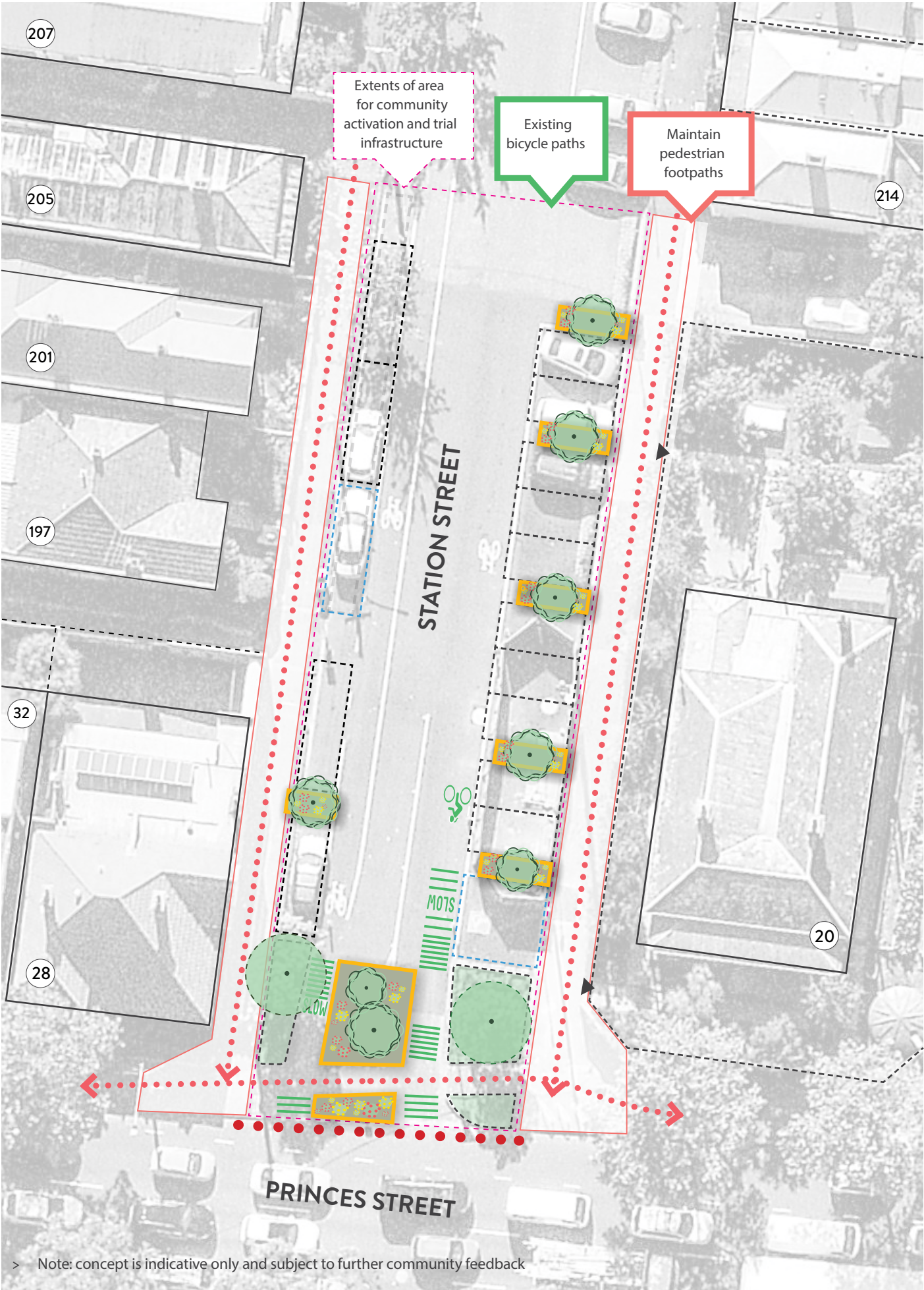
- > Footpaths - to be retained
- > Add street greenery
- > Parking to be retained
- > Maintain neighbourhood character

PROPOSAL INTENT

- > Lowest cost option that adds minimum amenity
- > Can be trialled for 12 months and removed
- > Pedestrian footpaths maintained
- > Existing bicycle entry and egress points maintained

PROPOSAL INGREDIENTS

- > Added greenery between car spaces
- > Temporary car park line marking
- > Temporary planter built around existing median island.
- > Cyclist alert strips added



KEY IDEAS - EXAMPLE IMAGES



Temporary car park line marking



Temporary bicycle awareness decals



Low raised planter beds add street greenery and break up temporary line marked car spaces



Temporary verge garden at southern end of street is planted with natives to serve as soft buffer between Station and Princes Street.



Minimal intervention to vehicle parking, pedestrian and cycle use

LEGEND



Footpaths - to be retained



Existing disabled parking - to be retained



Existing Bicycle Paths (no line marking)



Pedestrian Movement



Potential road closure extents



Roadway / area for community activation



Temporary line marking for car spaces



Cycle Alert Strips - painted (not raised)



Existing Tree and verge gardens



Temporary raised planter beds and verge gardens over existing roadway

WHAT YOU SAID

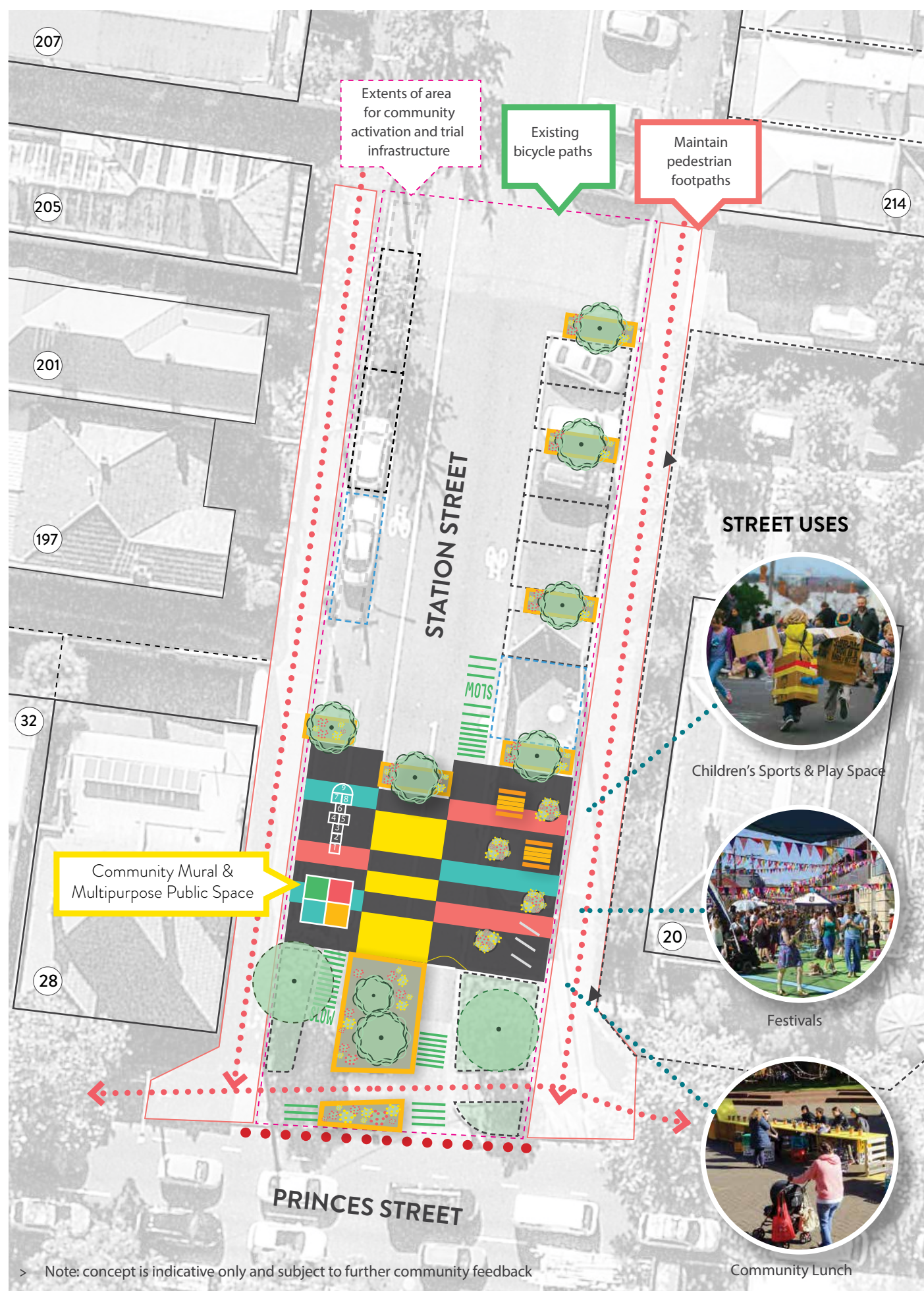
- > Public space for day to day play and activities
- > Public space to host one-off events
- > Added greenery
- > 'Soft' or landscaped road closure buffer
- > Opportunities to sit

PROPOSAL INTENT

- > Capitalise on street closure and move closure boundary north to maximise public space area for community and Carlton Neighbourhood Learning Centre use.
- > Can be trialled for 12 months and removed
- > Pedestrian footpaths maintained
- > Existing bicycle entry and egress points maintained

PROPOSAL INGREDIENTS

- > Added greenery throughout road closure area.
- > 4-6 car spaces traded for added street greenery usable public space
- > Car park line marking
- > Temporary planter built at southern end of Station Street
- > Added temporary seating



LEGEND

- | | | | |
|---|---|--|---|
| Footpaths - to be retained | Existing disabled parking - to be relocated | Existing Bicycle Paths (no line marking) | Cycle Alert Strips - painted (not raised) |
| Roadway / area for community activation | Temporary line marking for car spaces | Pedestrian Movement | Existing Tree and verge gardens |
| | | Potential road closure extents | Temporary raised planter beds and verge gardens over existing roadway |

KEY IDEAS - EXAMPLE IMAGES



Temporary bench seating



Added free-standing bicycle parking



Low raised planter beds add street greenery and break up temporary line marked car spaces



Verge garden at southern end of street is planted with natives to serve as soft buffer between Station and Princes Street.



Sports courts and community road mural aids and pedestrian priority - Brunswick Better Block pictured

STATION STREET
OPTION 3
LONG TERM



WHAT YOU SAID

- > Public Space for day to day play and activities
- > Public space to host one-off events
- > Added greenery
- > 'Soft' or landscaped road closure buffer
- > Opportunities to sit

PROPOSAL INTENT

- > Evolution of 'Option 2: 12 month trial'
- > Formalise trialled interventions
- > Capitalise on street closure and move closure boundary north to maximise public space area for community and Carlton Neighbourhood Learning Centre use.
- > Pedestrian footpaths maintained
- > Existing bicycle entry and egress points maintained

PROPOSAL INGREDIENTS

- > Raised pedestrian footpath at Station Street and Princes Street intersection.
- > Added greenery throughout road closure area.
- > 4-6 car spaces traded for added street greenery usable public space
- > Permanent car park line-marking
- > Verge garden bed at closure intersection
- > Space for temporary seating

KEY IDEAS - EXAMPLE IMAGES



Maintain planters bicycle parking for long term use and added street greenery.



Raised pedestrian crossing with bluestone square sawn setts, tactile ground surface indicators and directional signage.



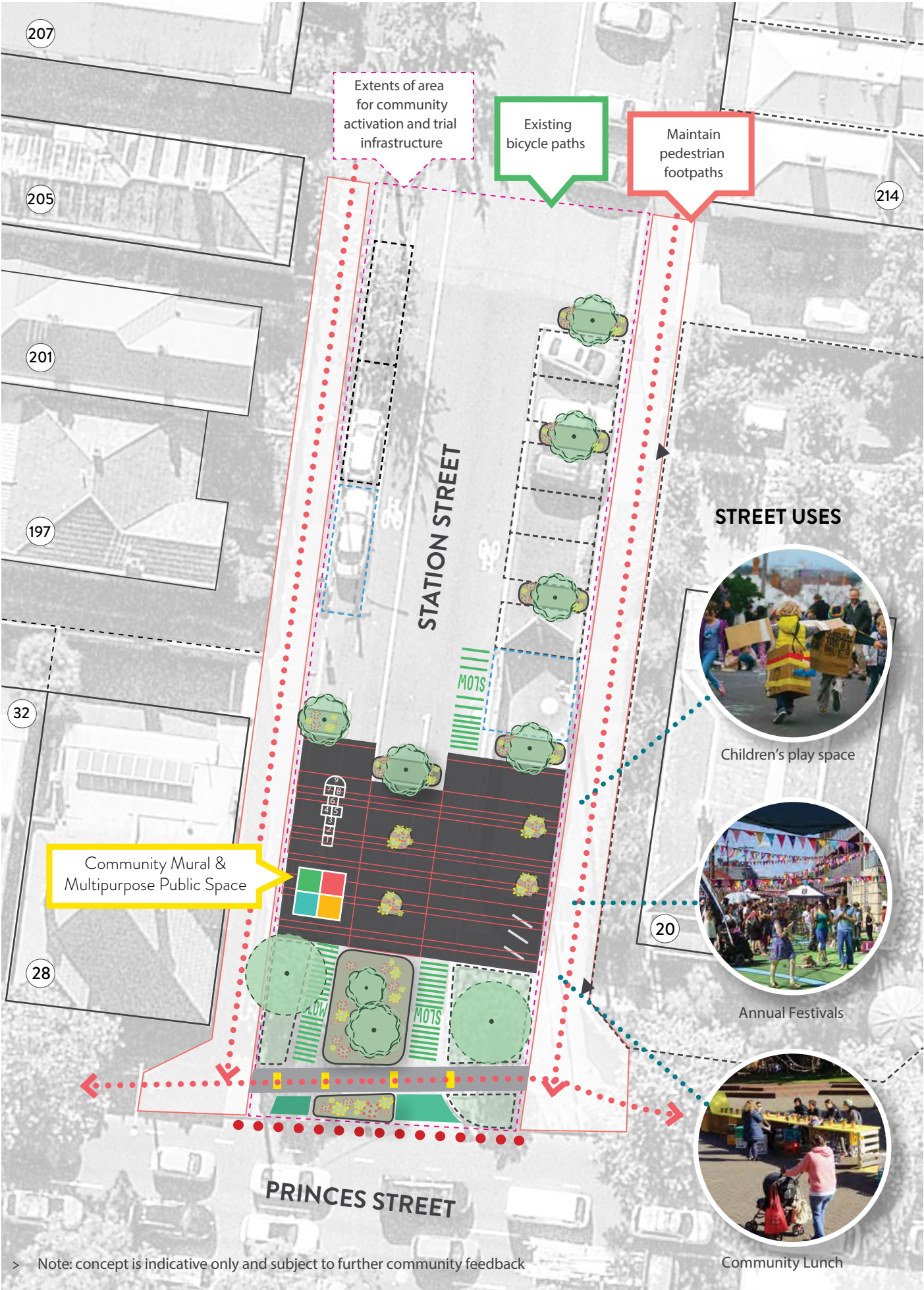
Planter beds add street greenery and break up line-marked car spaces



Verge garden at southern end of street is planted with natives to serve as soft buffer between Station and Princes Street. - image City of Yarra



Long term road mural inlay or asphalt surface treatment for sports, play and sense of place - example only.



LEGEND



Footpaths - to be retained



Existing disabled parking - to be relocated



Raised footpath with tactile ground surface indicators



Roadway / area for community activation



Line marking for car spaces



Pedestrian Movement



Potential road closure extents



Cycle Alert Strips - painted (not raised)



Existing Tree and verge gardens



Permanent planter beds or verge gardens over existing roadway