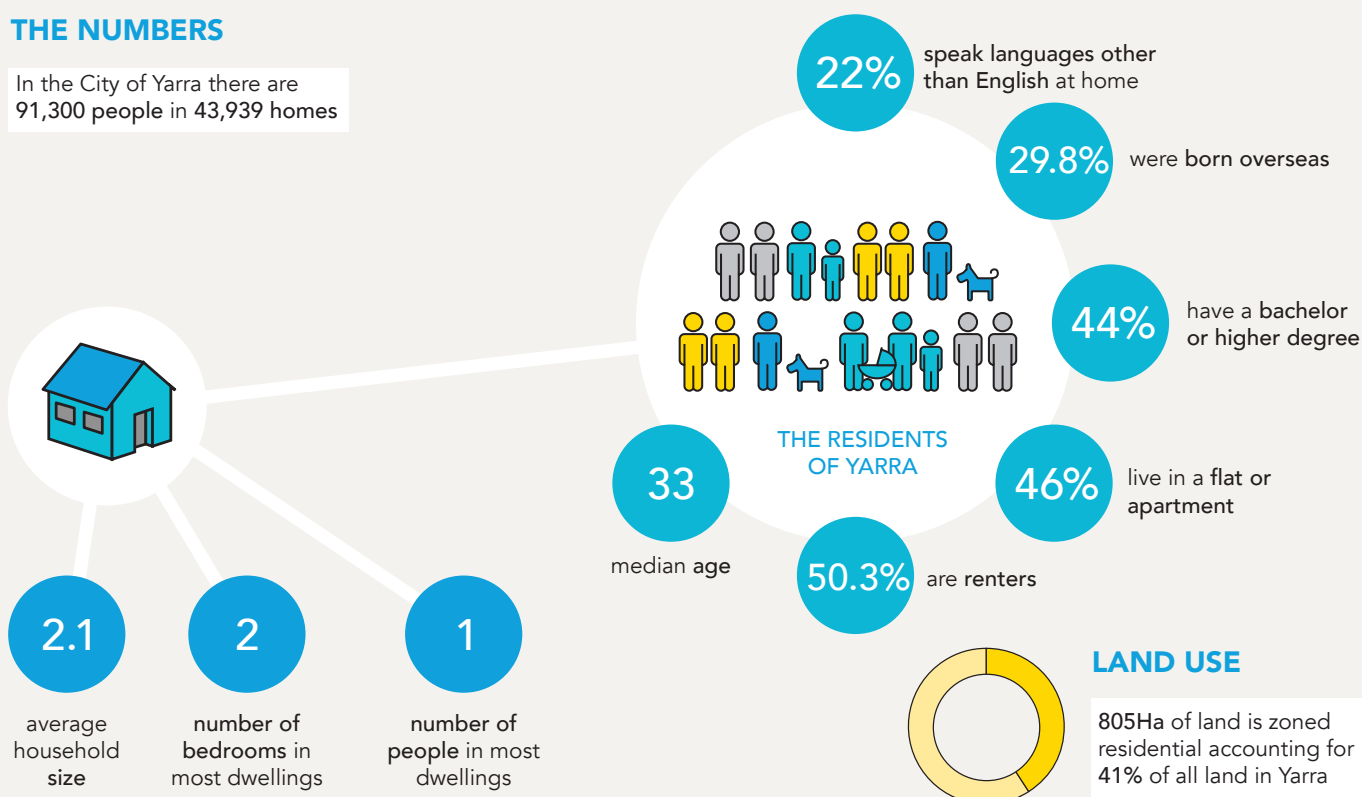


A Profile of People and Housing in Yarra

THE NUMBERS

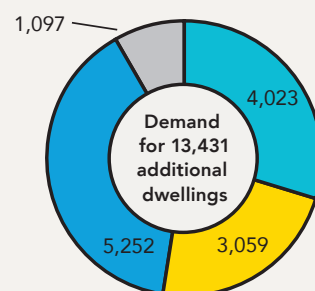
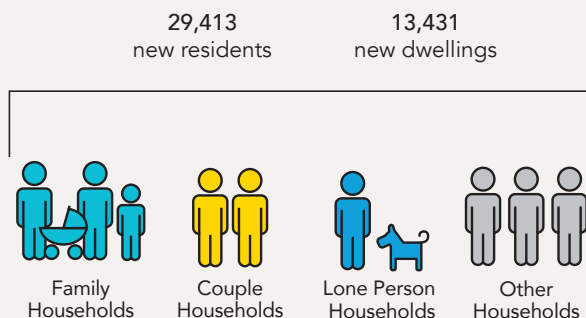
In the City of Yarra there are
91,300 people in 43,939 homes



FORECAST 2016–2031 HOUSING AND POPULATION



Yearly population
growth rate of 2%

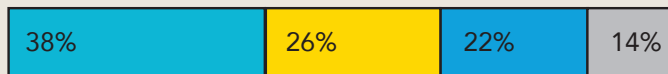


HOUSEHOLD SPLIT BY DWELLING TYPE



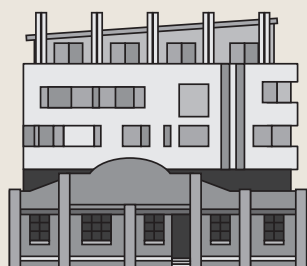
SEPARATE HOUSE

Separate houses are 14% of Yarra's housing stock and are predominantly occupied by families with children or couples without children.



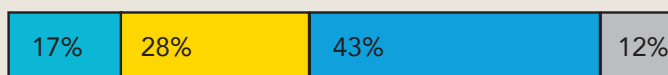
SEMI-DETACHED, ROW OR TERRACE HOUSE, TOWNHOUSE

Semi-detached, row or terrace houses and townhouses form 39% of Yarra's housing stock and are predominantly occupied by families with children or couples without children.



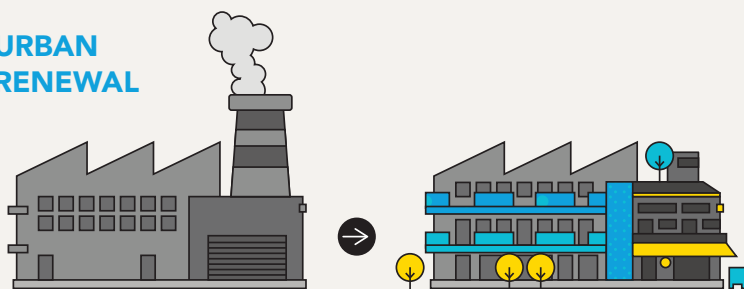
FLAT OR APARTMENT

Flats or apartments are 46% of Yarra's housing stock and are predominantly occupied by lone person households and couples without children.



Key Housing Trends in Yarra

URBAN RENEWAL



87%

87% of housing development was urban renewal (development in commercial areas, formerly industrial areas – usually larger apartment projects) and 13 % was infill (small-scale, replacing older dwellings with new ones).

72%

72% of new dwellings were in Activity Centres or on Strategic Development Sites.

PROJECTS



581 housing projects in 10 years has transformed 54 Ha of land.



Projects with 10+ dwellings were most prevalent in Richmond and Collingwood, while smaller projects with 2-9 dwellings were mostly in Richmond and Fitzroy North.



Since 2010, the number of new dwellings in Yarra has grown at a rate of 1,160 per year.



Approvals for apartments over 4 storeys have doubled from 2,394 (2006-2010) to 4,904 (2011-2015).

FURTHER ENQUIRIES