

2016	Preliminary community consultation.
2017	International House demolished, tenants relocated to Bargoonga Nganjin, North Fitzroy Library.
	Emely Baker Building nominated to become a community space.
	Community consultation on draft plans (current).
	Draft plans updated following community feedback.
	Draft Northern Precinct Plan presented to Council for adoption.
2018	Playground Concept Plan finalised.
	Playground construction begins.
2018 and beyond	Future key proposals contained in the Northern Precinct Plan are implemented (subject to future budget and planning processes).

#### Previous community feedback

In 2016 we sought feedback from park users and other members of the local community on various aspects of the northern precinct.

The draft plans presented in this flyer were informed by the key themes that emerged during this consultation process.

#### Key community requests included:

##### Park infrastructure

- Additional green space in the park.
- Expansion of the skate and BMX park.
- Improved BBQ and picnic area.

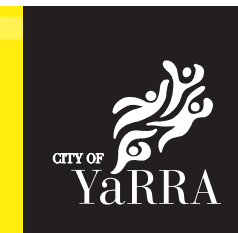
- Basketball half court.
- Chess tables.
- Improvements to cycling/pedestrian paths.

##### Playground

- More nature play opportunities.
- Continues to cater to younger age groups.
- More shade.

##### Buildings

- Demolish International House building and the carpark (now completed).
- Convert the Emely Baker building to a community space (underway).



## Enhancing Edinburgh Gardens: Northern Precinct and Playground

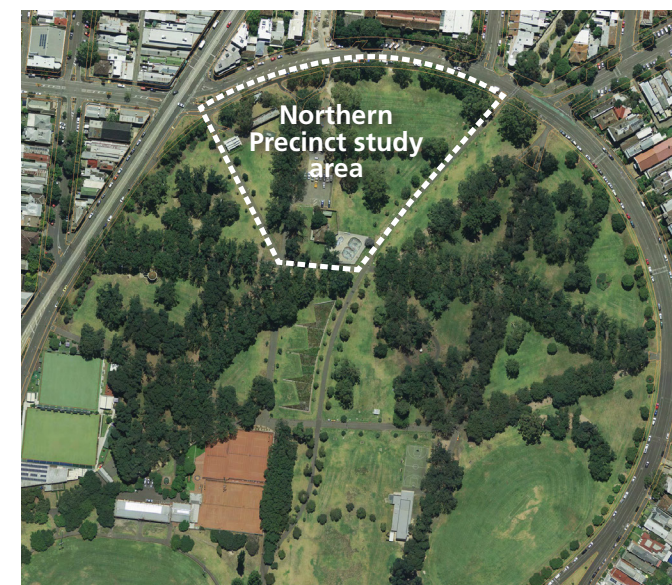
### Help us shape North Fitzroy's largest community space.

After consulting with park users in 2016, we have developed two draft plans.

- The Draft Northern Precinct Plan is a high-level plan to guide future works in the northern area of the park.
- The Draft Playground Concept Plan is a more detailed plan for an improved playground within the northern area of the park.

We are now seeking your feedback on the draft plans. Your contributions will help ensure that Edinburgh Gardens remains a great place to meet, play and relax.

The following pages provide an overview of the draft proposals.



### HAVE YOUR SAY

#### Online

Visit [www.yoursayyarra.com.au/eg-north](http://www.yoursayyarra.com.au/eg-north) to learn more about the draft plans and to submit your feedback. Registered users will receive email updates on the project.

#### In person

Join us on **Saturday 18 November 2017** in the BBQ area of Edinburgh Gardens north. Drop in any time from 10–11.30am to ask questions and provide feedback.

#### Email

[info@yarracity.vic.gov.au](mailto:info@yarracity.vic.gov.au)  
(subject line: *Enhancing Edinburgh Gardens*)

#### Mail

PO Box 168, Richmond VIC 3121

If you have any questions about the draft plans, contact our Open Space team on 9205 5555.

**Consultation closes 5pm, Tuesday 28 November 2017.**

#### What sort of feedback are we looking for?

- In general, do you support the Draft Northern Precinct Plan?
- In general, do you support the Draft Playground Concept Plan?
- What elements of the two drafts do you like most?
- What elements of the two drafts would like to change and how would you improve them?

### NEXT STEPS

Feedback received will inform updates to the draft plans. The Draft Northern Precinct Plan will be presented to Council for adoption and the Draft Playground Concept Plan will then be finalised by officers.

All proposals are subject to future budget and planning processes, with the exception of playground improvements which are funded in the 2017/18 capital works budget.

For information in your language, please call 9280 1940 and quote the **REF** number below. | 欲知粵語版本的資訊，請致電9280 1932並報上下列**REF**號碼。 | Για πληροφορίες στα Ελληνικά, παρακαλούμε καλέστε το 9280 1934 και αναφέρετε τον αριθμό **REF** παρακάτω. | Per informazioni in italiano siete pregati di chiamare il numero 9280 1931 e di citare il numero di riferimento (**REF** number) sottoindicato. | 欲知普通话版本的信息，请致电9280 1937并报上下列**REF**号码。 | Para información en castellano, llame al 9280 1935 y cite el número de **REF**. De más adelante. | Để biết thông tin bằng tiếng Việt, xin hãy gọi số 9280 1939 và nói số **REF** dưới đây. | للمعلومات باللغة العربية، يرجى الإتصال هاتفيا بالرقم 9280 1930 والإشارة إلى رقم المرجع **REF** المذكور أدناه. |





### Draft Northern Precinct Plan

This is a high-level plan to guide future works in the northern area of the park.

#### Key features of the Draft Northern Precinct Plan

- The playground has been moved further south and integrated into the natural setting of the park, clear of the tree protection zones of the existing trees.
- The BBQ area has been relocated to the north of the playground and will provide more tables and incorporate game elements such as chess.
- An activity precinct which will include the relocated table tennis table, a new basketball half-court and expanded skate/BMX facility has been nominated.
- Redundant fencing (no longer required following the removal of the carpark and demolition of International House) will be removed.
- Increased open space for passive recreation opportunities.
- More tree planting.

All proposals are subject to future budget and planning processes, with the exception of playground improvements which are funded in the 2017/18 capital works budget.

#### Legend

- 1 Old playground area (to be removed)
  - 2 Proposed new BBQ area
  - 3 Old table tennis table (to be relocated)
  - 4 Proposed new playground area
  - 5 Possible expanded skate and BMX area
  - 6 Existing skate and BMX area
  - 7 Possible new active play area (half court basketball and table tennis)
  - 8 Public toilets
  - 9 Emely Baker building
- Existing infrastructure (to be removed)
  - ... Tree protection zone
  - Existing tree

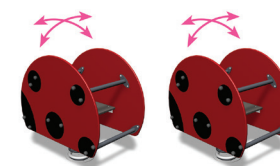
### Draft Playground Concept Plan

The Draft Playground Concept Plan is a detailed plan for an upgraded playground within the northern precinct.

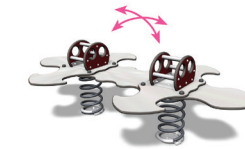
The proposed works are funded in the 2017/18 capital works budget.

#### Key features of the Draft Playground Concept Plan

- New location away from Alfred Crescent and clear of existing mature trees.
- More integration with natural play elements.
- New equipment with more play opportunities.
- Retained focus on equipment for younger age groups (to complement the play opportunities offered in the southern playground).
- New picnic and BBQ area.



A Rockers



B Multi-play see saw



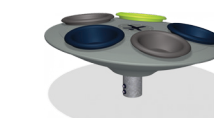
C Activity unit



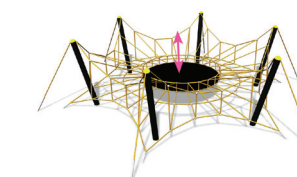
D Toddler swing



E Multi swing with basket swing



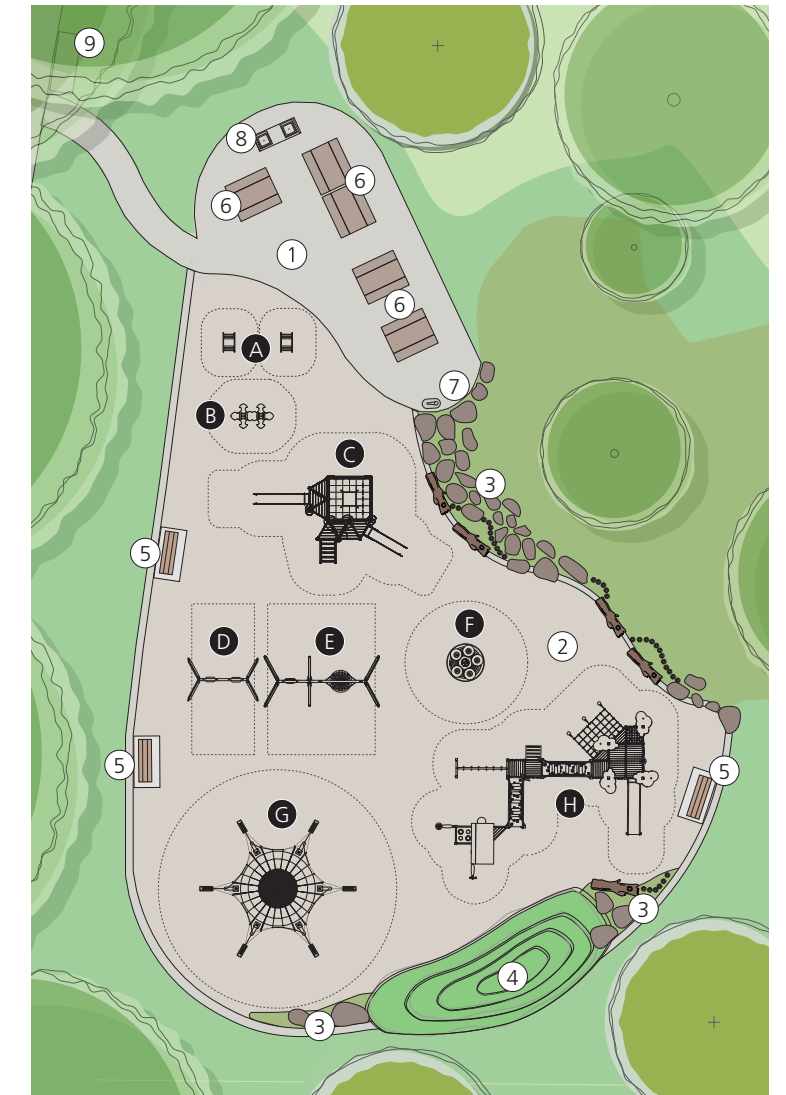
F Spinner



G Trampoline



H Activity unit



- 1 New BBQ area
- 2 New playground
- 3 Nature play areas
- 4 Grassed mound
- 5 New seats
- 6 New picnic tables with chess/game designs incorporated
- 7 Drinking fountain
- 8 BBQ
- 9 Bins

- Existing tree
- New tree
- Soft fall mulch
- Paving
- Grass
- Nature play areas
- Grass mound
- Safety boundary