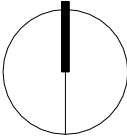


Open Space Catchment Analysis





Golden Square Bicentennial Park Landscape Masterplan

Wurundjeri Woi Wurrung Country
Parkville Street, Burnley VIC

CLIENT:



LANDSCAPE ARCHITECT:



Job No. 223676
Date: 17.04.23
Dwg No: CP05 of 1
Scale: 1:250 @ A1
0 2.5 5.0 7.5 10.0 12.5m



LEGEND

- Main Entry Point - Opportunity to create feature entry point into the park
- Existing Signage - Update to include site history
- Existing Plaques - Improve visibility with lower surrounding vegetation
- Existing Seating - Review style consistency. Opportunity to upgrade
- Existing Paths
- Future Path Connection
- Existing Play Space
- Future Accessible Play Equipment
- Future Picnic Space

EXISTING SERVICES

- Existing Lighting - Review brightness and location
- Existing Pit in Lawn Area - Review opportunities to relocate or adjust height to reduce hazards

Opportunity: Investigate current function of existing services and relocate pit locations. Existing sewer can remain.

EXISTING TREES

- Existing Tree
- Existing Tree in Poor Health - Future replacement with climate change resilient species
- Significant Tree - Retain and protect

Opportunity: Consider future replanting.

FUTURE PLANTING

- Future Low Native Plantings

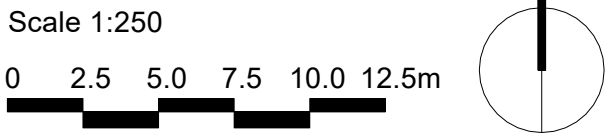
Opportunity: Improve planting aesthetics and increase biodiversity to create a wildlife corridor.

FUTURE WATER SENSITIVE URBAN DESIGN

- Future WSUD Treatment

Opportunity: Collect and treat stormwater runoff to irrigate plantings and increase infiltration.

Constraints and Opportunities Plan



Golden Square Bicentennial Park Landscape Masterplan

Wurundjeri Woi Wurrung Country
Parkville Street, Burnley VIC

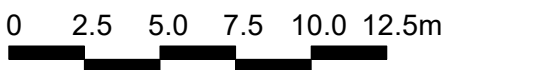
CLIENT:



LANDSCAPE ARCHITECT:



Job No. 223676
Date: 17.04.23
Dwg No: CP06 of 1
Scale: 1:250 @ A1



Landscape Masterplan Vision

To retain a much-loved, urban green retreat where the local community can gather, play, reflect and enjoy.

The landscape masterplan has been developed to guide future improvements, ongoing maintenance and the sustainable development of Golden Square Park.

The park is bounded by heritage houses and its landscape character includes a large open lawn, naturalistic playground, traditional style rotunda, standard BBQ facilities, walking paths, some seating and the much-loved Fairy Tree. Scattered plantings of predominantly evergreen native trees and some exotic deciduous trees have been established over time. Timber bollards surround the park and understory garden beds are sparse.

The community were a driving force in ensuring Burnley Primary School demolished in the 1970's was converted to this park, rather than be sold off for housing development as initially proposed. Today the park remains a much-loved green retreat and its role as an urban refuge continues as development increases in the surrounding areas. We used community feedback to develop and refine the masterplan.

Recommendations - On going

Tree Planting
Continue to maintain and care for existing trees within the park, particularly the Fairy Tree. Consider removal of some existing trees identified as senescing or in poor condition to improve passive surveillance. Consider future planting of suitable species for a changing climate and biodiversity improvements, as well as deciduous trees to improve options for all year sun/shade.

Furniture
Replace ageing furniture with a consistent suite across the park. Seating to be a mix of benches, seats with back and arm rests. Informal log seats are provided to the tie in with natural aesthetics of the dog off leash and Fairy Tree areas. Locate furniture to create informal social gathering spaces and quiet seating areas for reflection.

Water sensitive design and management
Seek opportunities for greater water efficiency, water security and improved soil moisture levels.

Recommendations - Short Term

- 01 Open Lawn area**
Improve the lawn area for recreational activities. Level the surface, top dress, provide new irrigation and remove redundant pits.
- 02 Existing signalised crossing**
Undertake a feasibility study to rationalise the crossing points between the park and train station. This study should provide a clear understanding of the primary access route to be encouraged and any infrastructure replacement options.
- 03 Reserve Entry**
New path and plaque relocated within feature entry garden beds.
- 04 Path connectors**
New paths to be constructed from existing pram crossing locations on surrounding streets to connect to the park's main path network.
- 05 Playspace**
Redesign play space to improve accessibility, play value, shade and offer a greater range of play opportunities for different ages and abilities. Include accessible play elements, routes and seating locations within the proposed play footprint. Ensure all elements meet current safety standards.

Recommendations - Mid Term

- 06 Picnic shelter and BBQ**
Improve the existing BBQ area with a new shelter, picnic setting, accessible BBQ unit and paved surface to improve access. The lawn area behind the proposed shelter provides a spill out space for larger gatherings.
- 07 Perimeter planting**
Replace existing perimeter timber bollards with groundcover and shrub planting over time. The new garden beds aim to improve biodiversity and create a physical barrier around the park, without compromising safety or visual permeability.
- 08 Lighting**
Prepare a lighting plan to improve safety and wayfinding provisions in the reserve. Implement as funding becomes available.

Recommendations - Long Term

- 10 Rotunda**
Replace the existing rotunda and ground surface with a suitable structure that provides plenty of seating and improved access.
- 11 Quiet space for reflection**
Create spaces that provide opportunity for quiet reflection. Include seating under existing shade trees and around sensory plants.



LEGEND

- Existing trees, predominantly native evergreen
- Existing Palm trees
- Existing Pine trees
- Existing feature evergreen trees
- Existing feature deciduous trees
- Existing tree to be removed in future to improve sightlines and protect infrastructure. Tree removal pending on on-going and future assessment of tree health.
- Proposed Trees - species to be confirmed
- Existing garden beds
- Proposed garden beds
- Garden bed mulch surface including mulch zone under existing Fairy Tree
- Lawn surface
- Proposed mounds formed using existing site excavated soil, locations to be confirmed on site
- Existing paths
- Proposed path and paved surfaces
- Proposed logs from tree removal work as informal seating edges and informal play elements
- Proposed picnic setting
- Proposed platform table
- Proposed seat with back and arm rest
- Proposed bench
- Proposed BBQ
- Proposed Bins
- Proposed drink fountain
- Existing light
- Relocated plaques
- Indicative dog off leash area
- Indicative future playground foot print

Golden Square Bicentennial Park Landscape Masterplan

Wurundjeri Woi Wurrung Country
Parkville Street, Burnley VIC

CLIENT:

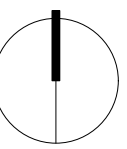


LANDSCAPE ARCHITECT:



Job No. 223676
Date: 17.04.23
Dwg No: MP01 of 1
Scale: 1:250 @ A1

0 2.5 5.0 7.5 10.0 12.5m



Golden Square Landscape Master Plan Consultation Phase One, August 28 – September 26, 2022

Summary of Engagement

- **Your Say Yarra Page** – live August 28 – September 26, 2022
<https://yoursayyarra.com.au/goldensquare>
- **Email campaign** – 1,378 recipients opened the email and 75 clicked through to the Your Say Yarra page
- **Your Say Yarra email** – 216 recipients opened the email and 4 clicked through to the Your Say Yarra page
- **Yarra Life e-newsletter** – 6,526 recipients opened the email and 35 clicked to the Your Say Yarra page
- **Facebook post** – reached 524 people and 2 clicked through to the Your Say Yarra page
- **Facebook pop-up event post** – reached 459 people and 3 clicked through
- **DL postcards delivered to 500 residents:**



Share your ideas for Golden Square Bicentennial Park

The master plan will set out a vision for the park and provide a framework to guide future design, development and management. It will also provide clear actions to guide the delivery of the master plan in the short, medium and long term.

As part of the master planning process, we'd like to hear from you. Scan the QR code for more information.



Consultation ends on **Monday 26 September** at 9am.

Have your say

Online
yoursayyarra.com.au/goldensquare

Email us
info@yarracity.vic.gov.au

Call us
9205 5555, or to speak to us in your own language call **9280 1940**.

In-person
At Golden Square Park on Saturday 10 September from 10am to midday.



National Relay Service
TTY 133 677 then 03 9205 5555

Languages

العربية	9280 1930	中文	9280 1937	Italiano	9280 1931	Tiếng Việt	9280 1939
		Ελληνικά	9280 1934	Español	9280 1935	Other	9280 1940

REF 19,224

- A1 corflute in park detailing consultation and pop-up events:

YOUR SAY YARRA

Golden Square Master Plan

We are developing a master plan for Golden Square Bicentennial Park in Burnley.

The master plan will set out a vision for the park and provide a framework to guide future design, development and management. It will also provide clear actions to guide the delivery of the master plan in the short, medium and long term.

As part of the the master planning process, we'd like to hear from you.

Share your feedback

Find out more about this project and provide your feedback online, by scanning the QR code.

Share your feedback by **9am on Monday 26 September 2022.**

If you want to find out more in your own language, please call our interpreter service on **9280 1940.**

Have your say

Online
yoursayyarra.com.au/goldensquare

Email
info@yarracity.vic.gov.au

Phone
 9205 5555

In person
 Pop by for a chat at Golden Square Park on **Saturday 10 September** from 10am to midday.

National Relay Service
 TTY 133 677 then (33) 9205 5055

Languages

Chinese	9280 1937	Italiano	9280 1931	Tiếng Việt	9280 1939
العربية	9280 1930	Ελληνικά	9280 1934	Español	9280 1935
Other	9280 1940				

REF 19,315

- Residents invited to speak to officers in person at Golden Square on Saturday 10 September from 10am until midday.

Survey Results

1. How would you describe your use of Golden Square?

Answer Choice	Percent	Count
Passing through (on the way to public transport, work, or school)	40.22%	72
For quiet recreation (reading, eating lunch)	44.13%	79
For informal active recreation (kicking a ball, running, walking)	50.84%	91
For family activities (playground, BBQ, picnic)	59.22%	106
For respite or refuge (from crowds and noise)	25.70%	46

Other*	22.91%	41
--------	--------	----

*Other included:

Answer	Count
Dog Walking	38
Like our backyard	4
Walking/exercise	3
Visual aspect	1
Playground	1

2. What types of activities/experiences would you like to see more of or added in this park?

Answer Choice	Percent	Count
Improved lawn quality	56.10%	92
Shade	39.02%	64
Sun	7.32%	12
More open areas for informal ball play	12.20%	20
More recreational areas for families (playground, picnic, BBQ facilities)	46.34%	76
More habitat for wildlife	30.49%	50
Lighting for night-time use	45.73%	75
Other*	15.24%	25

*Other included:

Answer	Count
Fenced in dog area	3
Improved picnic facilities	3
More garden beds	3
Community garden	3
Playground Upgrade	2
No dog off leash	1
More bins	1
Playground shade	1
Playground fence	1
No toilets	1
Self-cleaning toilet	1
Dog water bowl, possum boxes	1
Yarning circle	1
Night lighting	1

3. Is there anything else you would like to add?

Skipped: 73

Answered: 113 (60.8%). Responses have been grouped below:

Answer	Percent	Count
Seating/furniture/BBQ's		23
Leave as is		20

Make playground relevant for all kids (including older kids)		19
Shade Trees		8
Provide toilet		7
Improve Madden Grove ped crossing		7
Rejuvenate large grass area		7
Provide half-court		6
Provide fenced in area for dogs		6
Fence playground		6
Improve rotunda		5
Do not provide toilet		5
Shade playground		5
Plant natives		5
Provide exercise equipment		5
More lighting		5
Establish garden beds		4
Provide bike jumps		3
Create community garden		2
Plant exotic trees		2
Provide more dog bags (biodegradable)		2
Name rotunda after Ron Pinnell		1
Establish 'yarning circle' to acknowledge traditional owners		1
Provide bat and bird boxes		1

4. What age groups in your household use the park? Tick all that apply.

Answer choices	Percent	Count
4 years and under	19.21	34
5 – 11 years	17.51	31
12 – 17 years	3.95	7
18 – 24 years	5.65	10
25 – 34 years	19.77	35
35 – 44 years	33.33	59
45 – 54 years	25.99	46
55 – 64 years	15.82	28
65 – 74 years	14.12	25
75 – 84 years	3.39	6
85 years	.56	1

4. What is your connection Golden Square. Tick all that apply.

Answer choices	Percent	Count
I live in the area	92.18%	165
I work in the area	7.26%	13
I visit the park with my family	41.90%	75

I visit the park with friends	32.96%	59
I visit the park on my own	25.7%	46
I own a local business	2.23	4

Summary of in-person catch up with staff at Golden Square on Saturday 10 September (10am until midday).

Fiona O'Byrne and Lisa Monaghan (Open Space Planning & Design) and Gabby Penfold (Communications) attended the in-person catch up on behalf of Council. In total approximately twenty people popped down to say hi and share their thoughts over the course of the morning. Ward Councillors Crossland and Landes also came past and stayed for an hour and a half. Everyone was very constructive and community minded. The main takeaways were:

Natural Environment

- People really value the park and the open space it offers.
- People especially value the existing large open lawn area for ball playing, dog walking etc. and wanted it retained and the grass quality improved if possible (during summer it's a dust bowl).

Circulation & access

- Diagonal curved path from the NW to SE is well used and seems to be about the right width and right location.
- Formal entrances to the park seemed about right – despite no entrance directly in alignment with the pedestrian crossing. Ped crossing hardly used.
- Good parking near the park – people come from Toorak apparently for the playground.

\$ to be spent

- Lots of concerns raised about the need for the masterplan to be realistic as Council has 'limited funding'.

Soft landscaping

- Lots more shrub and ground cover planting to improve reserve edge treatments, interest, and aesthetic qualities of the reserve.
- The large existing Elm tree in the park, which is of heritage significance, is highly valued. Children play in this tree – bounce and climb on the low hanging branch.

Infrastructure:

- The gazebo is much loved and well used, however it could do with a 'zhuzh' up. The existing gazebo has seating around the edges which people liked. They did not want picnic tables within the gazebo as they bring their own and this offers more flexibility in terms of use.
- Pavement in the gazebo is tired and mortar is coming loose – some people raised this as a trip hazard.
- Lots of requests for better and more considered picnic tables and seating within the park.
- People seemed to like the location of the playground but were a bit ambivalent about the playground itself. Scope for more exciting play opportunities (there was a specific request for a spinner), but the existing footprint was supported.
- A couple of comments raised about fencing the playground.
- Toilet in the reserve is not supported.
- Lighting was Ok but could be more.

- A balance of shade and sun.

Officer observations:

- Open lawn area very uneven and not suitable for ball games in the current state.
- Service pits lids and grates in lawn areas should be investigated for redundant status and safety.
- Condition of lawn is generally very poor.
- Health of quite a few of the Eucalypts along the main path looked in poor condition.
- Heritage elm needs better protection. Increase extents of mulching and maybe some kid friendly signage about not bouncing on the tree limb and to be kind to the tree. Nature based play should be considered in future play upgrades as well as accessibility not just for children but for carers with a disability.
- Main entry points from the NW and SE could be improved with alignment to pram ramps/footpath and more welcoming.
- Other infrastructure needs an assessment on the condition and suitability of existing location.
- Planting in general could be substantially improved to encourage greater diversity of wildlife.

MEMORANDUM

TO	City of Yarra, Attn: Richa Swarup	FROM	Michael Cook
RE	Golden Square Bicentennial Park, significance of trees	DATE	22 June 2022

Introduction

This memorandum summarises a preliminary appraisal of Golden Square Bicentennial Park, a public open space on Stawell Street, Burnley managed by the City of Yarra. The park is located within the Golden Square Precinct (HO322) (Figure 1), noting limited reference is made to its significant values and elements in the precinct statement of significance (refer below).

Yarra manages the park in line with council’s policies and best practices, including the Yarra Heritage Strategy and Heritage Asset Management Plan. A recommendation of the Heritage Asset Management Plan was for further work to be undertaken to provide certainty as to the heritage values at Golden Square Bicentennial Park and establish appropriate management procedures. This preliminary advice has been commissioned on that basis, and in the context of recent and anticipated future tree management requirements and other works within the park.

As part of this review, a site visit was conducted at Golden Square Bicentennial Park on 12 June 2022; noting the balance of the precinct was not inspected. The comments and advice provided are based on this preliminary work, and not a detailed investigation into the history or fabric of the place. As part of this review, consultation was requested with Mr. Ian Wight (Yarra Heritage Advisory Committee), but no response has been received as of 21 June 2022.

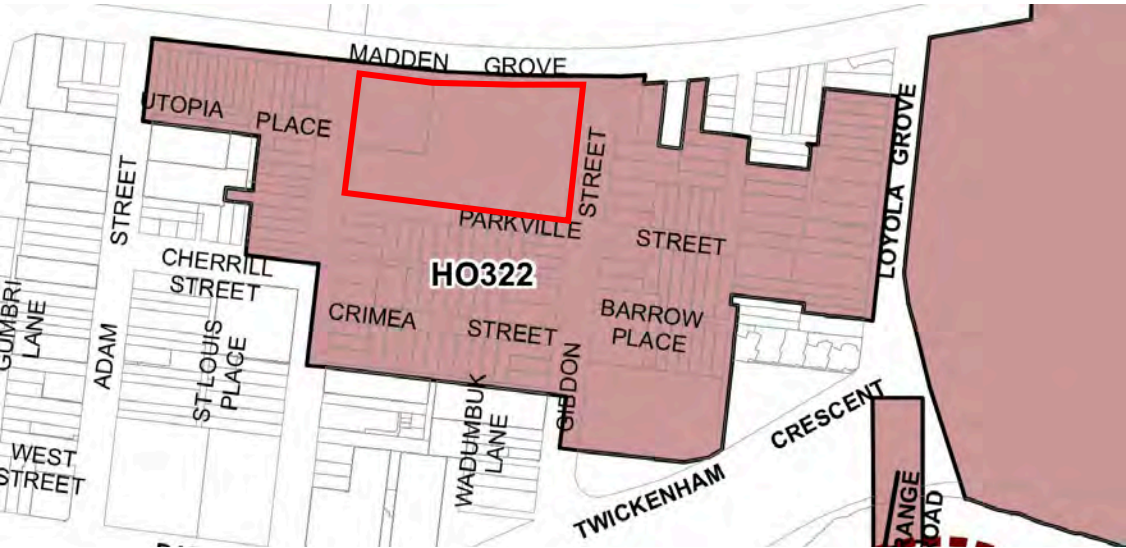


Figure 1 Detail, Yarra Planning Scheme Map 09 Heritage Overlay, with Golden Square Bicentennial Park indicated (red)
Source: Planning Schemes online

Description and summary development history

Golden Square Bicentennial Park is a 0.8 hectare open space (Figure 2 - Figure 4) occupying a full block immediately south of the Hawthorn and Glen Waverley railway corridors, east of Burnley Station, and bounded by Stawell, Parkville and Gibdon streets and Madden Grove which runs parallel to the railway.

The western part of the block was developed as the Burnley State School no. 2853 in the late nineteenth century (Figure 5). The balance of the block to the east is understood to have been reserved initially for the Catholic Church, however it does not appear to have ever been developed as a church facility; instead, a small subdivision of residential lots was laid out and built to the east of the school before 1899 (Figure 6). Additional lots were developed to the south, adjoining Parkville Street.

In the c. 1970s the school was closed and demolished, and the block subsequently consolidated into the future park site, although the particular history of this land assembly has not been researched. Golden Square Bicentennial Park is believed to have opened in c. 1988 as part of the City of Richmond's commemoration of the 1788 arrival of the First Fleet of convict ships at Sydney; this is consistent with aerial photography showing that park development occurred after 1984.

Today the park contains a variety of trees, open lawns, a timber playground and a small hexagonal shelter. Most of the trees on the site were planted after the mid-1980s.



Figure 2 View of Golden Square Bicentennial Park from corner of Stawell and Parkville Streets (south-west); the English Elm tree is seen at right (with autumn foliage)



Figure 3 Golden Square Bicentennial Park, view from Parkville and Gibdon streets (south-east)



Figure 4 Golden Square Bicentennial Park, view from far corner of Gibdon Street and Madden Grove (north-east)

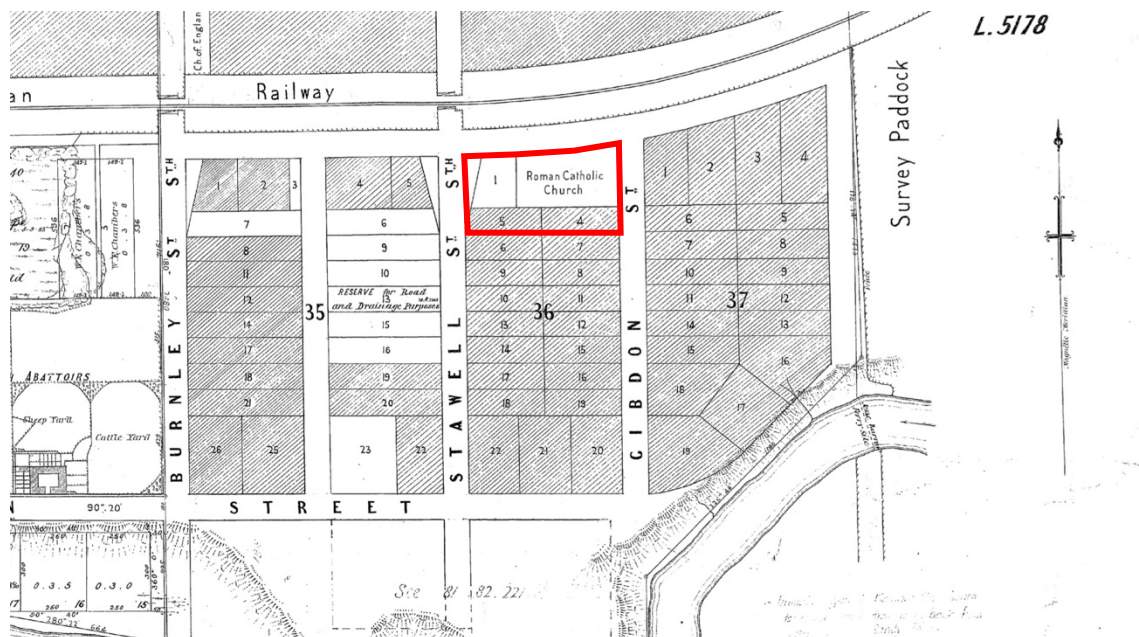


Figure 5 R19E survey, dated 19.05.1877; the future Golden Square Bicentennial Park shown is outlined in red; the school occupied the lot within that area marked '1'
Source: Central Plan Office, SERV

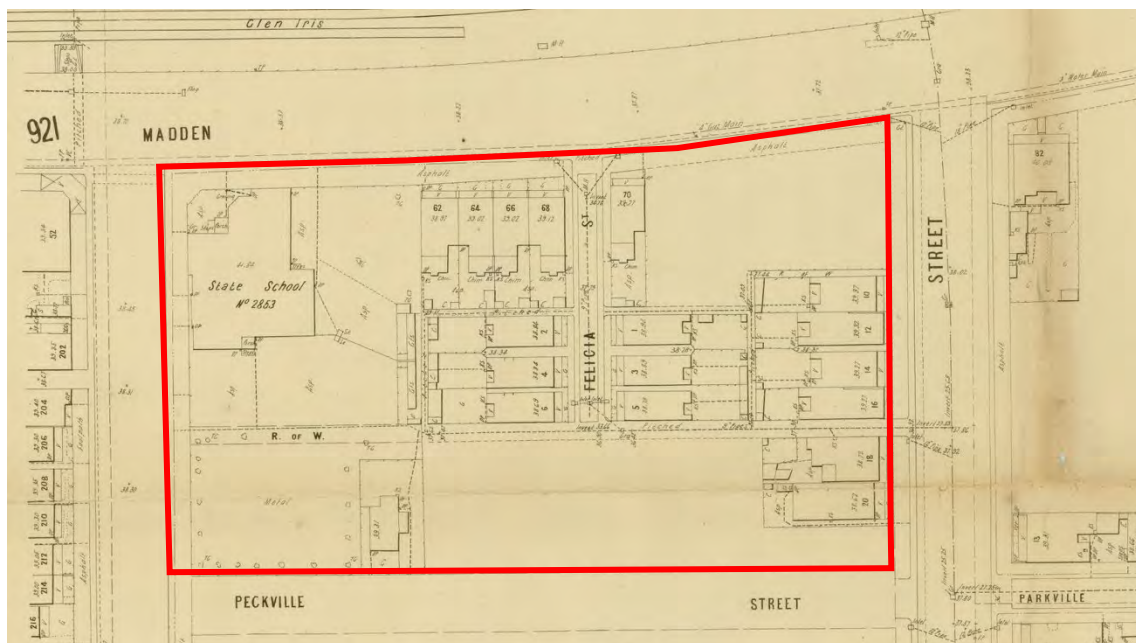


Figure 6 Melbourne and Metropolitan Board of Works (MMBW) plan no. 923 (1899) illustrating Burnley State School and the residential development to the east of this (red outline, north to top)
Source: State Library of Victoria

Relevant heritage and planning controls

As noted above, Golden Square Bicentennial Park is located in the Golden Square Precinct (HO322), a local heritage precinct applied to portions of nine blocks of Burnley located south of the railway corridor and east of Burnley Street (Figure 1). No tree controls are applied under the heritage overlay. Within the park, built form is limited to the open-sided park shelter and the children's playground.

The name Golden Square was reportedly attached to the broader precinct at an early date and did not relate to the specific site now occupied by the park. The precinct statement of significance (Graeme Butler 2007, updated 2013) identifies the following values (excerpted) related to the site:

What is significant?

...

Burnley State School SS2853 was a three storey Gothic Revival style school, built in the 1880s. It was demolished in 1979 and the site developed as a residential square or public park, with some significant residual trees from the school era.

...

Contributory elements also include:

- Evidence of a former historic school reserve and plantings;

...

Why is it significant?

The Golden Square Heritage Overlay Area is significant: ...

- For the Golden Square Bicentennial Park and its mature trees, as symbolic of the Burnley Primary School, and the adjacent church sites, as two significant elements on the area's history; ...

Historical tree plantings

A review of historical aerial photography provides clear evidence for the provenance of most vegetation at Golden Square Bicentennial Park as stemming from the c. 1988 development of the parkland. This includes the park's large assortment of native trees, as well as the handful of Canary Island Date Palms also present in the park, which were not present prior to the park development.

The only surviving tree originating in historical use of the site is the large English Elm (*Ulmus procera*) tree (Figure 7) in the park's south-west, opposite 2 Parkville Street. This tree is clearly distinguished on aerial photography from 1931 and 1945 (Figure 8), situated to the rear of the state school, along with another large tree to its immediate north-east that is no longer extant. The English Elm was identified as Tree #18 in a recent 'Tree Health Report for Golden Square Park' (undated), with a DBH of 1100, good health and fair structure.

A 1984 aerial photograph captured prior to the park redevelopment shows just three specimens or groups of trees on the future park block, which by this time had been cleared of buildings and fenced for future development (Figure 9). The remaining extant Elm tree can be seen in this image, along with a medium-sized tree situated on the western boundary opposite 140 Stawell Street, with a more

extensive group of vegetation along part of the northern boundary, terminating west of the former cross-over to a short lane identified as Felicia Street on the 1899 MMBW plan. The western tree appears to have been initially retained in the redeveloped parkland but based on Nearmap imagery was removed in June-July 2010. The northern trees, grown on a set of former house-lots west of Felicia Street, did not have an association with the school and appear to have been removed after 1984 as they do not correspond with the locations of trees along Madden Grove today.

Historical newspaper coverage provides accounts of the Burnley State School's participation in the 1904 Arbor Day, with an event held on the school grounds. The principal of the Burnley School of Horticulture, C.B. Luffman, attended and gave a speech to the students, following which trees are said to have been planted in the school grounds.¹ Arbor Day plantings may also have occurred on the school grounds in 1905, and it is possible that the extant Elm tree dates to these 1904 and 1905 plantings. In several later years, Arbor Day appears to have been held jointly by area schools at larger parklands.



Figure 7 English Elm, Golden Square Bicentennial Park, in autumn leaf

¹ *Richmond Guardian*, 2 July 1904, p. 2



Figure 8 Detail, 1945 aerial image showing the former Burnley State School and the extant English Elm tree in the then-school ground (red arrow); as well as the completed residential development of other parts of the urban block
Source: Land Victoria Aerial Photography Collection



Figure 9 Detail, 1984 aerial photograph showing the cleared and consolidated block prior to its development as the Golden Square Bicentennial Park; of the trees seen in this image, only the English Elm (red arrow) has been retained to the present day
Source: Land Victoria Aerial Photography Collection

Preliminary heritage advice

As presently worded, the statement of significance implies that a greater number of trees and other elements provide evidence of the former state school reserve at the corner of Stawell Street and Madden Grove. In fact, only one tree has been retained from the very small number that ever existed on the school ground. The Golden Square Bicentennial Park is much larger than that original school site and presents no other evidence of the former location and boundaries of the school grounds.

Although the original form and character of the state school ground has been obscured by the acquisition of additional land and plantings of both native trees and exotic palms undertaken since the 1980s, the parkland retains value for its potential to denote and interpret the former site of the state school. However, the park's current elements and signage do not address this history.

As an anchor to the HO322 precinct, the park does represent a continuity of public use of this block, and of some form of accessible playing ground on this site since the late 1800s. The park's identification and inclusion in HO322 has few planning ramifications for Yarra's management of the modern parkland, other than in promoting retention; although there would be policy considerations under the overlay in respect to new built form in the event a more substantial building were proposed on the site in future.

The Elm tree is the sole surviving element of the state school's presence on the site, and may date to early Arbor Day plantings reportedly held at the school grounds in 1904 and 1905. The Elm is a prominent specimen which has had the opportunity for unrestricted growth in the former school ground area, developing a broad and sprawling canopy rarely seen in English Elms in Melbourne. The tree has evident arboricultural significance; a value deepened by the historical connection to the state school.

Although no tree controls are applied under the precinct HO, the current precinct statement of significance specifically identifies evidence on the state school reserve and plantings. In this context, the Elm tree should be treated as significant within HO322, and Yarra as the responsible manager of the park should take all appropriate measures to conserve the tree.

The Elm tree is significant and should be protected, however it is currently not addressed by permit controls under the planning scheme. While addressed by permit requirements as a significant tree (by size) under Yarra's local laws, the specific history of this tree and its intrinsic significance on the site would not necessarily be considered in an assessment of a permit to remove a significant tree by size.

The precinct HO designation could be updated in future via a Planning Scheme Amendment to apply tree controls to the English Elm in Golden Square Bicentennial Park. However, a faster process may be available by listing the Elm tree in Yarra's Significant Tree Register at that register's next update. As the register is constituted under local laws, this would only require the tree to be assessed by an arborist and its registration approved under the processes applied to previous amendments to the register, and would not require a planning scheme amendment. This would clearly flag the significance of the Elm tree, in future management and open space works undertaken by Yarra personnel and contractors.

The history of the Burnley State School and the development of Bicentennial Park should be interpreted on site. A contemporary interpretation approach to the site might also include a more critical reflection on the contested history of the First Fleet and of the commemoration activities that accompanied the bicentennial in 1988, or other reconciliation components.

Summary of recommended planning and management measures

- Recommend the former Burnley State School Elm tree for future assessment for inclusion in the Yarra Significant Tree Register;
- Add a note to available internal management systems such as TRIM or GIS, and any other relevant file, to denote the Elm Tree at Golden Square Bicentennial Park as a significant tree;
- In future, review the information presented about the park in the HO322 precinct statement of significance to more completely reflect the site's development history and current condition;
- Interpret the history of the Burnley State School (including the Elm tree) and the development of Bicentennial Park through signage and/or other elements on site.

Appendix 7

DBH (Diameter at Breast Height)
was measured at 1.4 m above ground level, or calculated from the total stem area if the

Maturity
summarises the age class of the tree.
J – Juvenile(Young tree with mostly dynamic mass)
S – Semi-mature (Actively growing tree that has not yet reached 70% of its mature
M – Mature (Tree has reached around 70% of its full size and growth has slowed)

Health
summarises observations of tree health made in the field:
G– Good , no significant pest or disease problems, expected growth rates, dense canopy, and good leaf colour
F – Fair, minor pest or disease problems, average growth rates, canopy sparse in places, or some chlorosis
P – Poor, serious pest or disease problems, poor growth rates, sparse canopy, or major leaf discolouration.
Dead

Structure
summarises observations of tree structure made in the field:
G – Good, All forks are sound; no major decay in limbs or stem
F – Fair, Some structurally poor fork s are developing, or decay is developing in limbs or stem . Major structural failure is unlikely
P - Poor, Serious structural defects are present, either structurally poor fork s, or decayed limbs or stem ; structural failure is likely.

* Multi stem

Tree No	Species	DBH (mm)	Tree Maturity	Tree Health	Tree Structure	Comments
1	Eucalyptus nicholii	560	M	G	F	Fruiting body in decay pocket, halfway up stem
2	Lophostemon confertus	430	M	G	F	Co-dom in main union
3	Eucalyptus mannifera	440*	M	F	F	
4	Corymbia maculata	680	M	G	G	
5	Grevillea robusta	100	S	G	G	
6	Corymbia maculata	390	M	G	G	
7	Eucalyptus scoparia	730	M	G	G	Fruiting body in decay pocket, lower stem
8	Casuarina cunninghamiana	530	M	G	F	Co-dom in main union
9	Hesperocyparis arizonica	200*	M	G	G	
10	Hesperocyparis arizonica	140*	M	G	G	
11	Hesperocyparis arizonica	240*	M	G	G	
12	Hesperocyparis arizonica	220*	M	G	G	
13	Eucalyptus camaldulensis	360*	M	F	G	
14	Brachychiton populneus x acerifolius 'Jerilderie Red'	<100	S	G	G	
15	Gladitsia triacanthos	<100	S	G	G	
16	Gladitsia triacanthos	<100	S	G	G	
17	Gladitsia triacanthos	<100	S	G	G	
18	Ulmus procera	1100	M	G	F	
19	Corymbia maculata	530	M	G	G	
20	Eucalyptus scoparia	680	M	G	G	
21	?					TREE REMOVED
22	Phoenix canariensis	900	M	G	G	
23	Eucalyptus camaldulensis	360	M	G	G	
24	Eucalyptus camaldulensis	100	M	G	G	
25	Eucalyptus leucoxylon	100	M	F	G	
26	Eucalyptus camaldulensis	107	M	F	G	
27	Eucalyptus leucoxylon	<100	M	G	G	
28	Corymbia citriodora	380	M	G	F	
29	Eucalyptus camaldulensis	107	M	G	F	
30	Fraxinus angustifolia subsp. Oxycarpa	240	M	P	F	
31	Fraxinus angustifolia subsp. Oxycarpa	340	M	F	G	
32	Corymbia citriodora	280	M	G	G	
33	Eucalyptus camaldulensis	320	M	G	G	
34	Corymbia citriodora	400	M	G	G	
35	Eucalyptus leucoxylon					TREE REMOVED
36	Corymbia maculata	370	M	G	G	
37	Eucalyptus leucoxylon	<100	M	G	G	
38	Eucalyptus blakelyi	105	M	F	G	
39	Eucalyptus leucoxylon					REMOVAL REQUIRED
40	Corymbia citriodora	570	M	G	F	
41	Prunus cerasifera	<100	M	F	P	
42	Eucalyptus leucoxylon	102	M	F	G	
43	Eucalyptus leucoxylon	<100	M	F	G	
44	Eucalyptus leucoxylon	<100	M	F	P	
45	Corymbia maculata	740	M	G	G	
46	Eucalyptus leucoxylon	<100	M	G	G	
47	Eucalyptus leucoxylon	<100	M	G	G	
48	Eucalyptus microcorys	340	M	G	G	
49	Corymbia maculata	380	M	G	G	
50	Eucalyptus saligna	350	M	G	G	
51	Cupaniopsis anacardioides	<100	S	G	G	
52	Acacia longifolia	<100	S	G	G	
53	Banksia integrifolia	105	M	G	G	
54	Corymbia citriodora	<100	S	F	G	
55	Grevillea robusta	420	M	G	G	
56	Acacia retinodes	<100	S	F	P	

57	Eucalyptus sideroxylon	660	M	G	F	
58	Eucalyptus camaldulensis	360	M	G	P	
59	Corymbia ficifolia	270	M	G	G	
60	Eucalyptus leucoxylon	<100	M	G	G	
61	Eucalyptus scoparia	350	M	G	G	
62	Syzygium australe	320*	M	G	G	
63	Banksia integrifolia	300	M	G	G	
64	Corymbia maculata	440	M	G	G	
65	Corymbia maculata	460	M	G	G	
66	Eucalyptus nicholii	470	M	G	G	
67	Grevillea robusta	260	M	G	G	
68	Eucalyptus camaldulensis	200	M	G	G	
69	Melaleuca armillaris	360	M	G	G	
70	Grevillea robusta	330	M	G	F	Pruned hard for powerlines
71	Corymbia ficifolia	220*	M	G	G	
72	Grevillea robusta	360	M	G	F	Pruned hard for powerlines
73	Melaleuca linariifolia	600*	M	G	F	Pruned hard for powerlines
74	Eucalyptus nicholii	720	M	G	G	
75	Eucalyptus camaldulensis	870*	M	F	G	
76	Ficus macrophylla	380*	M	G	G	
77	Corymbia citriodora	330	M	G	G	
78	Phoenix canariensis	920	M	G	G	
79	Eucalyptus nicholii	790	M	G	G	
80	Corymbia ficifolia	<100	M	F	G	
81	Melaleuca lanceolata	260*	M	F	F	
82	Eucalyptus nicholii	560	M	G	G	
83	Corymbia citriodora	390	M	G	G	
84	Lophostemon confertus	250	M	G	G	
85	Eucalyptus camaldulensis	290	M	F	G	
86	Eucalyptus camaldulensis	<100	M	F	F	
87	Eucalyptus camaldulensis	260	M	G	F	
88	Casuarina cunninghamiana	230	M	G	F	Pruned hard for powerlines
89	Casuarina cunninghamiana	160	M	F	F	
90	Corymbia citriodora	200	M	G	G	
91	Eucalyptus camaldulensis	170	M	F	G	
92	Corymbia ficifolia	140	M	P	F	
93	Corymbia citriodora	400	M	F	G	
94	Melaleuca styphelioides	280	M	P	F	
95	Corymbia citriodora	430	M	G	G	
96	Corymbia citriodora	320	M	G	G	
97	Corymbia citriodora	540	M	G	G	
98	Melaleuca styphelioides	300	M	F	G	
99	Corymbia maculata	210	M	F	G	
100	Corymbia maculata	490	M	G	G	
101	Eucalyptus cladocalyx	800	M	G	G	
102	Eucalyptus camaldulensis	260	M	G	G	
103	Corymbia calophylla	240	M	F	P	
104	Corymbia calophylla	440	M	G	G	
105	Angophora costata	360	M	G	G	
106	Eucalyptus camaldulensis	660	M	G	G	
107	Phoenix canariensis	560	M	G	G	
108	Eucalyptus leucoxylon	<100	M	G	G	
109	Eucalyptus leucoxylon	<100	M	G	G	
110	Eucalyptus nicholii	740	M	G	G	
111	Eucalyptus leucoxylon	<100	M	G	G	
112	Eucalyptus camaldulensis	<100	S	G	G	
113	Eucalyptus leucoxylon	<100	M	G	G	
114	Phoenix canariensis	550	M	G	G	
115	Phoenix canariensis	640	M	G	G	

