



YAMBLA PAVILION UPGRADE Clifton Hill

Town Planning Stage Landscape Drawings

Drawing Index

- TP-01 Site Context Plan & Drawing Index
- TP-02 Existing Conditions Plan
- TP-03 Demolition Plan
- TP-04 Landscape Materials and Surfaces Plan
- TP-05 Planting Plan
- TP-06 Planting Details

Site Context Plan

PROPOSED LANDSCAPE WORKS SUMMARY

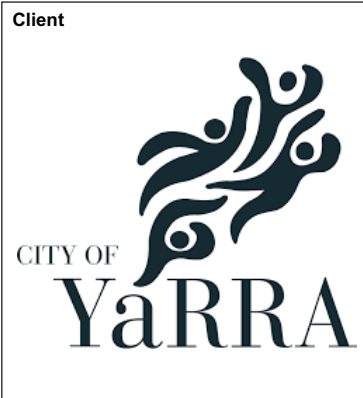
The following drawings have been prepared on behalf of the City of Yarra as part of a Town Planning Application for the construction of a new Sports Pavilion and the associated external works as required to replace the soccer club change rooms and toilets at Yambla Reserve. These drawings describe the proposed landscape works which will be implemented as part of the improvements to the site. These works will be undertaken to ensure the new works are integrated within the existing site context.

While five recently planted *Eucalyptus leucoxylon* (Yellow Gum) trees are required to be removed to construct the new building, additional replacement trees are proposed to offset this loss (Refer Planting Plan L04 and accompanying plant schedule). The proposed landscape works will integrate the proposed new building and the established landscape character of the Merri Creek corridor. Improved facilities including disabled parking bays, pedestrian pathways, seating, site furniture, tree planting, landscaping and spectator areas are proposed as part of the improvements works.

These landscape drawings should be read in conjunction with the Town Planning report and drawings for the architectural and related aspects of the application.



GROUND FLOOR 143 FRANKLIN STREET
MELBOURNE, VIC 3000
T: (03) 9329 6844
F: (03) 9329 6336
E: office@urbaninitiatives.com.au
W: www.urbaninitiatives.com.au

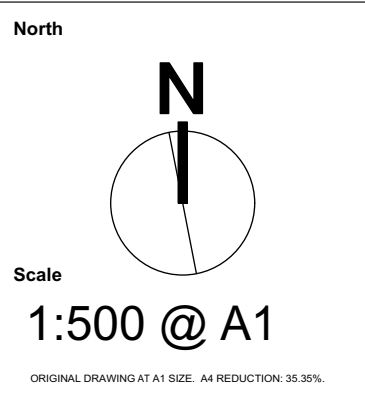


Consultants

No.	Date	REVISION	By
-----	------	----------	----

No.	Date	ISSUE	By
-----	------	-------	----

Dwg Date: | Date
Plot Date: | 5/6/20
Drawn By: | DW
Checked By: | TH
CAD File Name: | YamblaPavilion_Town Planning.vwx



Project No.
18052
Yambla Pavilion
Ramsden St, Clifton Hill VIC 3747

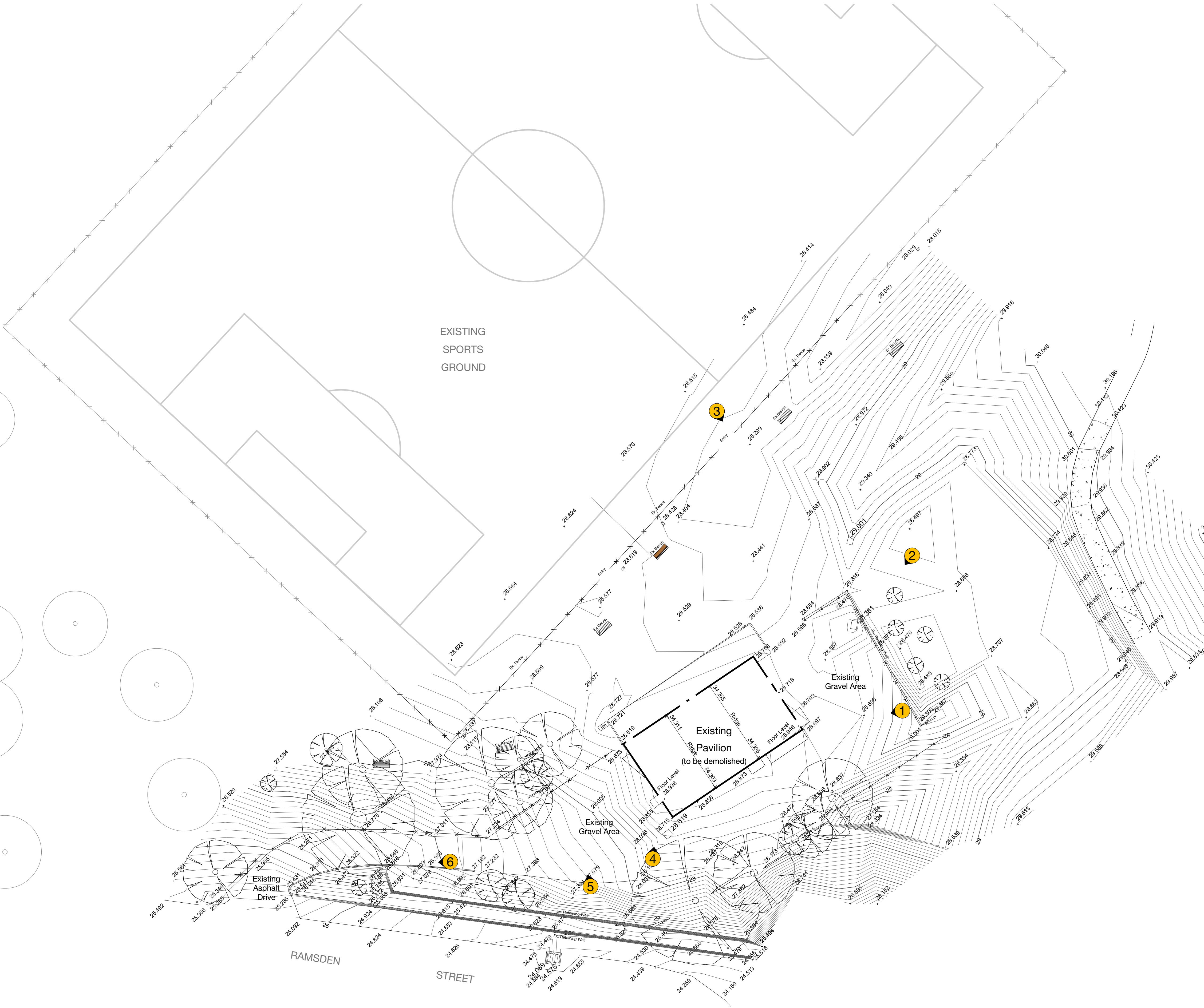
Drawing No.	Rev #	Status.
TP-01	OF 5	A

Drawing Name:
Site Context Plan & Drawing Index

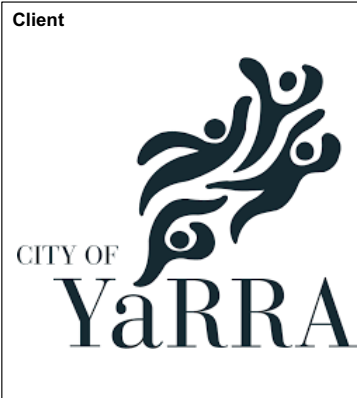
LEGEND

EXISTING

- 27.344 Surface level
- Tree Existing
- Tree
- Fence
- Building
- Kerb
- 25.755 Existing spot levels
- Bin
- Bench
- Contours
- TP Telstra pit
- IP Irrigation pit
- UP Unclassified pit
- DP Drainage pit
- 1 Photo reference no. & location



GROUND FLOOR 143 FRANKLIN STREET
MELBOURNE, VIC 3000
T: (03) 9329 6844
F: (03) 9329 6336
E: office@urbaninitiatives.com.au
W: www.urbaninitiatives.com.au



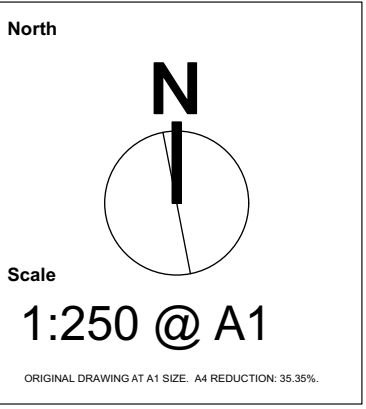
Client

Consultants

No.	Date	REVISION	By

No.	Date	ISSUE	By
3	5/6/20	Town Planning Landscape Plans Rev	TH
2	13/5/20	Town Planning Landscape Plans	TH
1	07/12/18	Draft Town Planning Landscape Plans	TH

Dwg Date:	Date
Plot Date:	5/6/20
Drawn By:	DW
Checked By:	TH
CAD File Name:	YamblaPavilion_Town Planning.vwx



Project No.	18052
Yambla Pavilion	
Ramsden St, Clifton Hill VIC 3747	

Drawing No.	Rev #	Status.
TP-02	OF 5	A
Drawing Name:	Existing Conditions Plan	

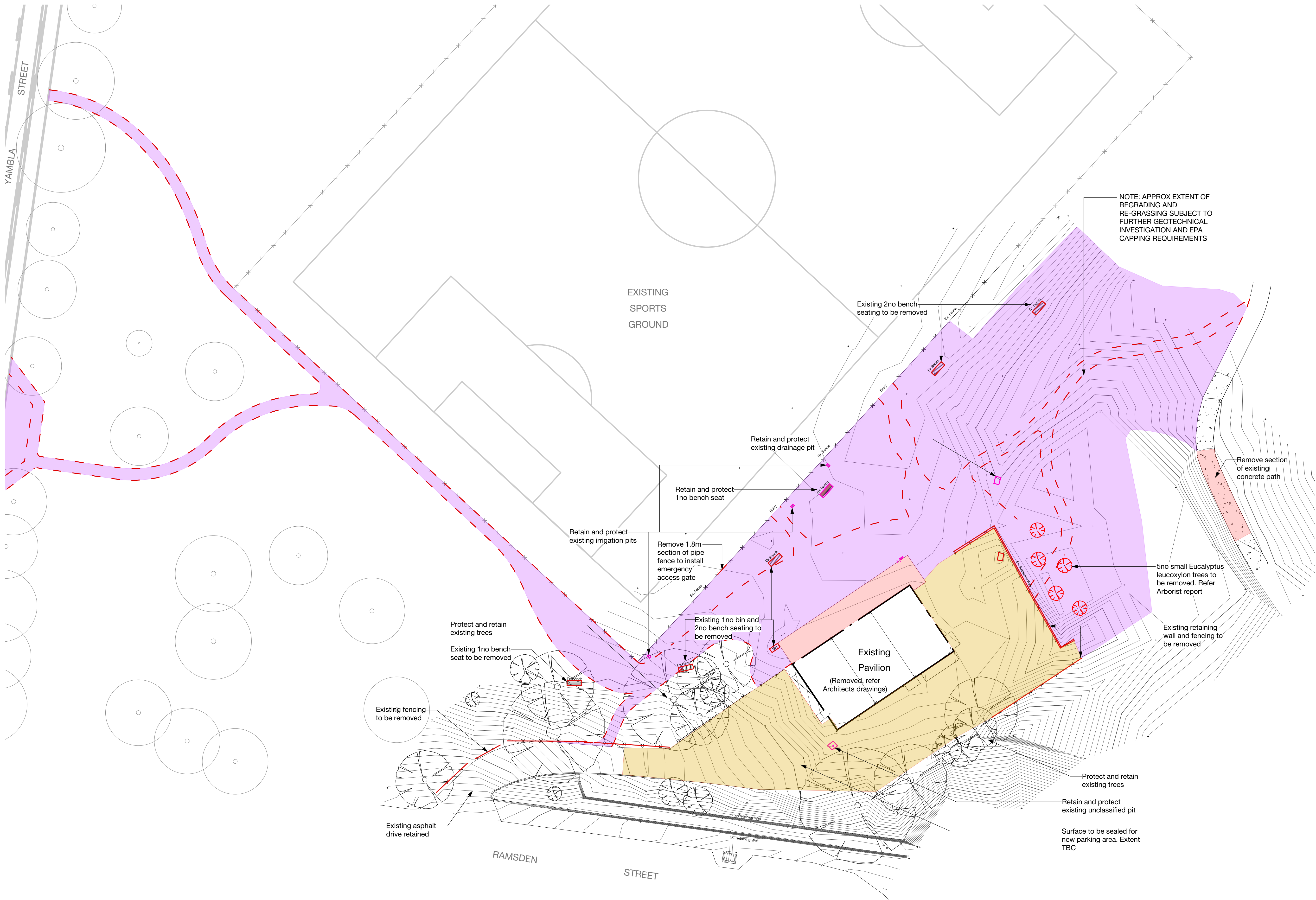
LEGEND

EXISTING

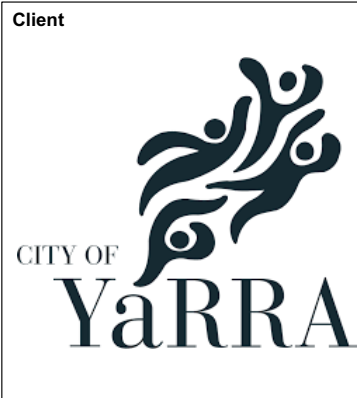
- Tree Existing
- Tree - Retain and protect trees according to AS4970
- Fence
- Building
- Kerb
- Bin
- Bench
- Contours

DEMOLITION

- Tree to be removed
- Approximate extent of concrete surface to be removed & regraded as required
- Approximate extent of gravel surface to be removed & re-surfaced as required
- Approximate extent of grass surface to be regraded
- Existing grass to be removed to construct new paths
- Items removed or relocated
- Items to be retained/protected



GROUND FLOOR 143 FRANKLIN STREET
MELBOURNE, VIC 3000
T: (03) 9329 6844
F: (03) 9329 6336
E: office@urbaninitiatives.com.au
W: www.urbaninitiatives.com.au

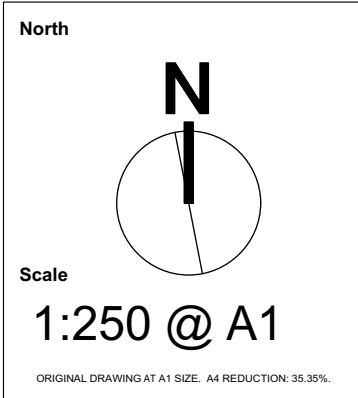


Consultants
k20 Architecture

No.	Date	REVISION	By

No.	Date	ISSUE	By
3	5/6/20	Town Planning Landscape Plans Rev	TH
2	13/5/20	Town Planning Landscape Plans	TH
1	07/12/18	Draft Town Planning Landscape Plans	TH

Dwg Date:	Date
Plot Date:	5/6/20
Drawn By:	DW
Checked By:	TH
CAD File Name:	YamblaPavilion_Town Planning.vwx



Project No.
18052
Yambla Pavilion
Ramsden St, Clifton Hill VIC 3747

Drawing No. **TP-03** Rev # **OF 5** Status. **A**
Drawing Name.
Demolition Plan

PLANT SCHEDULE							
Code	Botanical Name	Common Name	Included in Plant mix	Supply size	Approx Mature Size (HxW) m	Density	Quantity / no.
	Shade/Structural Trees						
Euc leu	<i>Eucalyptus leucoxylon ssp. connata</i>	Yellow Gum	Location as shown	45 litre	15 x 12		5no.
Euc mel	<i>Eucalyptus melliodora</i>	Yellow Box	Location as shown	45 litre	25 x 15		4no.
Aca imp	<i>Acacia implexa</i>	Lightwood	Location as shown	30cm	8 x 7		3no.
	Garden Bed Planting						
Cor gla	<i>Correa glabra</i>	Rock Correa	Mix B	tube	2 x 2	2/m2	44no.
Cle mic	<i>Clematis microphylla</i>	Small-leafed Clematis	Mix C	tube	1.2 W	3/m2	66no.
Dia lon	<i>Dianella longifolia</i>	Pale Flax Lily	Mix A	tube	.5 x .5	4/m2	160no.
Dis cra	<i>Disphyma crassifolium ssp. clavellatum</i>	Rounded Hoon Flower	Mix B	tube	1.2 W	3/m2	132no.
Ein nut	<i>Einadia nutans</i>	Nodding Saltbush	Mix A & Mix C	tube	.5 x 1	3/m2	120no.
Enc tom	<i>Enchylaena tomentosa</i>	Ruby Saltbush	Mix C	tube	.5 x 1	3/m2	66no.
Cal cit	<i>Calocephalus citreus</i>	Lemon Beauty-Heads	Mix A	tube	.3 x 1	4/m2	60no.
Cal lac	<i>Calocephalus lacteus</i>	Milky Beauty-Heads	Mix A	tube	.3 x .3	4/m2	60no.
Chr sem	<i>Chrysocephalum semipapposum</i>	Clustered Everlasting	Mix B	tube	.3 x 1	4/m2	88no.
Gre ros	<i>Grevillea rosmarinifolia</i>	Rosmary Grevillea	Mix B	tube	2 x 1	2/m2	44no.
Ken pro	<i>Kennedia prostrata</i>	Running Postman	Mix C	tube	1.2 W	3/m2	66no.
Lom lon	<i>Lomandra longifolia</i>	Spiny-headed Mat Rush	Mix A	tube	1 x 1.2	4/m2	160no.
Poa mor	<i>Poa morrisii</i>	Velvet Tussock Grass	Mix A	tube	.3 x .3	4/m2	160no.
The tri	<i>Themeda triandra</i>	Kangaroo Grass	Mix B & Mix C	tube	.4 x .7	4/m2	154no.
Wah com	<i>Wahlenbergia communis</i>	Tufted Bluebell	Mix A	tube	.2 x .2	4/m2	100no.

* Note:
All selected planting is indigenous and should be grown from local provenance stock and supplied by an approved nursery (such as VINC)

LEGEND

EXISTING

- Tree Existing
- Tree - Retain and protect trees according to AS4970
- Fence
- Building
- Kerb

Proposed

- Proposed native tree
- Planting mix A
- Planting mix B
- Planting mix C
- Reinstated grass area

Note: Garden beds not irrigated

Mix sqm areas
A = 248 sqm
B = 116 sqm
C = 113 sqm

Existing trees and grass retained

New garden bed and groundcover planting (154sqm) in mulched bed. Plant with mix A plant species. Refer plant schedule for density and mix

Mix A - 154sqm
Dia lon x 100
Ein nut x 75
Lom lon x 100
Poa mor x 100
Wah com x 100

New timber bollards on existing driveway to separate 1.2m wide pedestrians from vehicle access

Existing asphalt driveway retained

EXISTING
SPORTS
GROUND

Take care when constructing path to minimise impacts on tree TPZ

Seating terraces (x3 tiers at 450 high) build for salvaged bricks from demolition of existing pavilion. Double skin wall with capping (to be detailed by structural engineer)

Approx extent of regrading and regrassing. Note extent subject to further geotechnical investigation and EPA capping requirements

New Pavilion
(refer Architects drawings)

Garden bed with new groundcover planting (94sqm) in mulched bed with 200mm topsoil. Plant with mix A plant species. Refer plant schedule for density and mix

Mix A - 94sqm
Dia lon x 60
Ein nut x 45
Cal cit x 60
Cal lac x 60
Lom lon x 60
Poa mor x 60

Take care when constructing path to minimise impacts on tree TPZ

Supplement existing garden bed with (113sqm) of mix C plant species. Refer plant schedule for density and mix. Take care not to disturb existing tree roots

Mix C - 113sqm
Cle mic x 66
Dis cra x 66
Enc tom x 66
Ken pro x 66
The tri x 88

Supplement existing garden bed with (116sqm) of mix B plant species. Refer plant schedule for density and mix

Mix B - 116sqm
Dis cra x 66
Cor gla x 44
Chr sem x 88
Gre ros x 44
The tri x 88

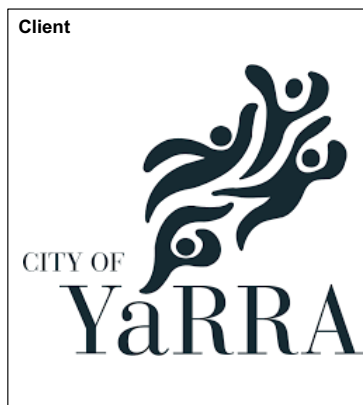
Maintenance Schedule

Task	Frequency
Weeding	3 Monthly
Mulching	3 Monthly
Plant Replacement	Annually



GROUND FLOOR 143 FRANKLIN STREET
MELBOURNE, VIC 3000

T: (03) 9329 6844
F: (03) 9329 6336
E: office@urbaninitiatives.com.au
W: www.urbaninitiatives.com.au

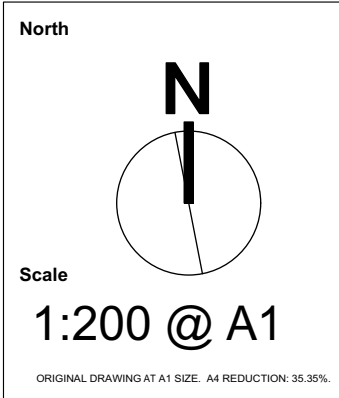


Consultants
k20 Architecture

No.	Date	REVISION	By

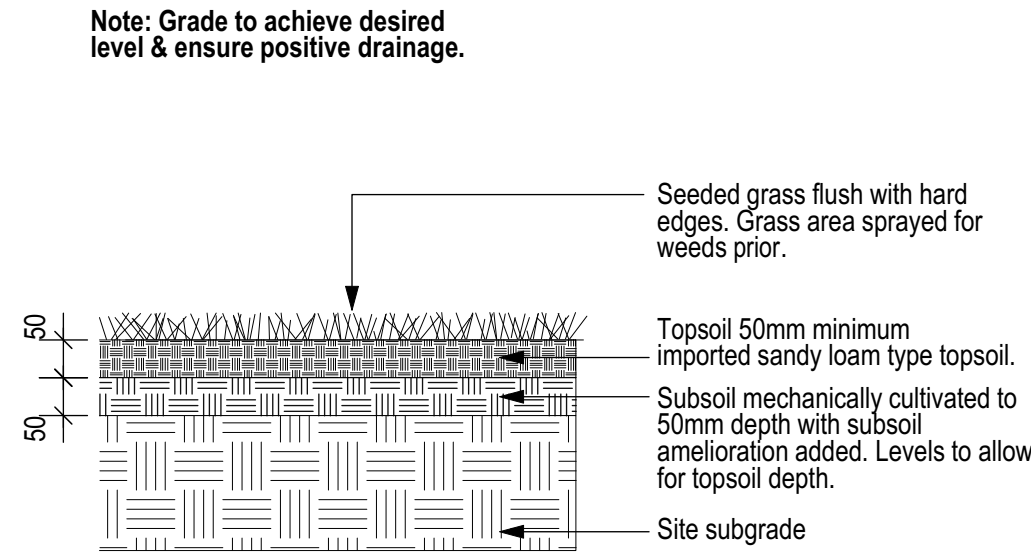
No.	Date	ISSUE	By
3	5/6/20	Town Planning Landscape Plans Rev	TH
2	13/5/20	Town Planning Landscape Plans	TH
1	07/12/18	Draft Town Planning Landscape Plans	TH

Dwg Date:	Date
Plot Date:	5/6/20
Drawn By:	DW
Checked By:	TH
CAD File Name:	YamblaPavilion_Town Planning.vwx

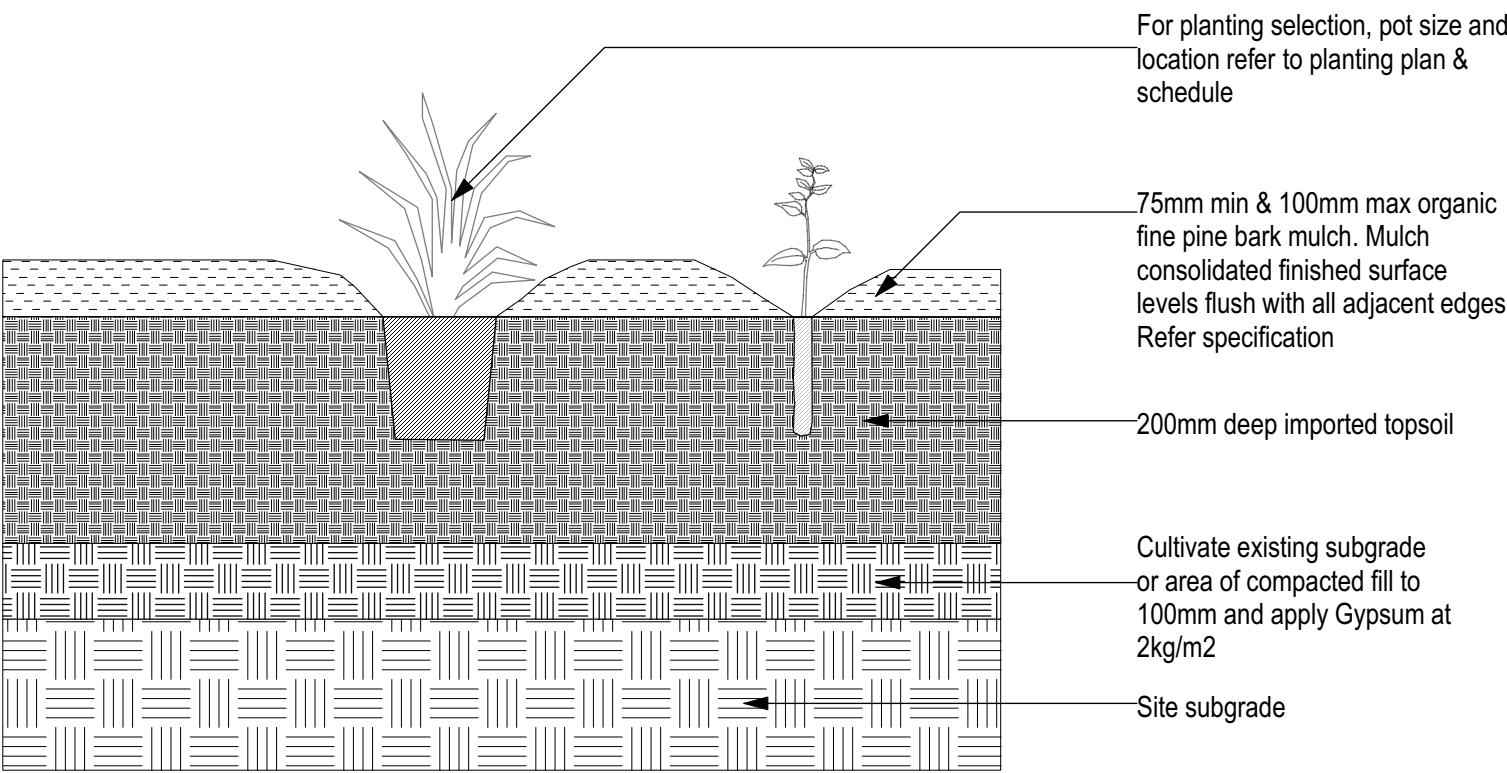


Project No.
18052
Yambla Pavilion
Ramsden St, Clifton Hill VIC 3747

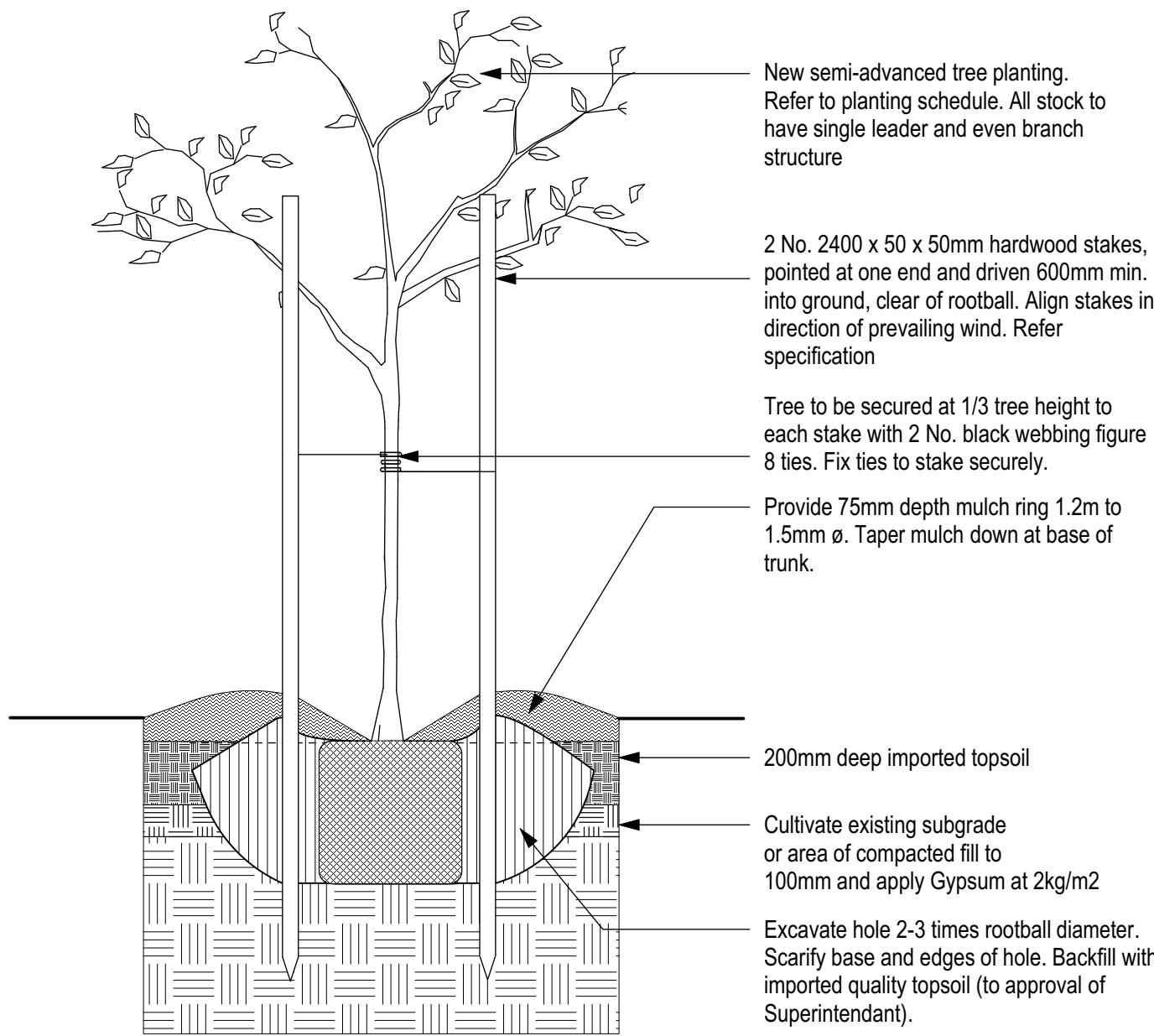
Drawing No. **TP-05** Rev # **OF 5** Status. **A**
Drawing Name.
Planting Plan



1 **Lawn - Seeded Grass**
Scale: 1:10



2 **Garden Bed & Planting Detail**
Scale: 1:10



3 **Semi-advanced Tree Planting Detail**
Scale: 1:20



GROUND FLOOR 143 FRANKLIN STREET
MELBOURNE, VIC 3000
T: (03) 9329 6844
F: (03) 9329 6336
E: office@urbaninitiatives.com.au
W: www.urbaninitiatives.com.au

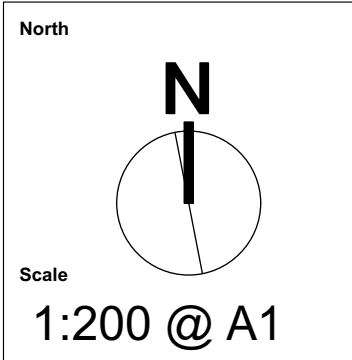


Consultants
k20 Architecture

No.	Date	REVISION	By

No.	Date	ISSUE	By
3	5/6/20	Town Planning Landscape Plans Rev	TH
2	13/5/20	Town Planning Landscape Plans	TH
1	07/12/18	Draft Town Planning Landscape Plans	TH

Dwg Date:	Date
Plot Date:	5/6/20
Drawn By:	DW
Checked By:	TH
CAD File Name:	YamblaPavilion_Town Planning.vwx



Project No.
18052
Yambla Pavilion
Ramsden St, Clifton Hill VIC 3747

Drawing No. **TP-06** Rev # **5** Status. **A**
Drawing Name.
Planting Details