

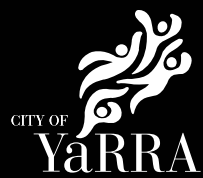
Yarra City Council

# Heidelberg Road Corridor

Photographic Survey

June 2019

Precincts 1 to 3





## Precinct 1 - Yarra Bend

Jeffrey Street looking south to the junction of Heidelberg Road





Junction of Heidelberg Road and Jeffrey Street looking south east to commercial and residential buildings on the south side of Heidelberg Road



Heidelberg Road - looking east near the junction of Yarra Bend Road and Jeffrey Street





Albert Street - looking W at No14



Public housing tower - 1A Holmes Street



Public housing towers - looking from oval near Westgarth Street

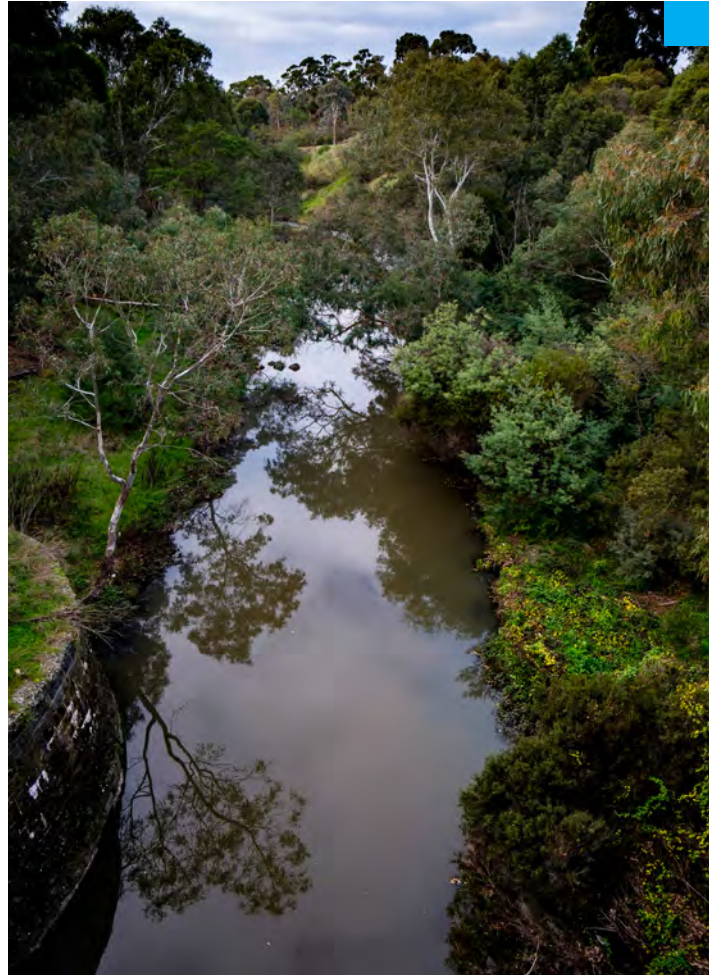




Offices - Porta - south side Heidelberg Road



Merri Creek looking south from Heidelberg Road



Self Storage - looking SW from the corner of Albert and Westfield Streets





Heidelberg Road - looking west near Yarra Bend Road - showing bike lane



Albert Street looking east from Holmes Street showing factory and interface with housing







Businesses - industry and Yarra Bend Park oval looking north to Porta Mouldings





## Precinct 2 - Station Street

Grandview Hotel - NW corner of Station Street and Heidelberg Road





Junction of Heidelberg Road and Station Street looking west to Grandview Hotel



Heidelberg Road - cafe NE corner of Arthur Street





Near Arthur Street

Looking west along south footpath - Arthur St



Heidelberg Road - looking west near Panther Place





## SE corner of Panther Place and Heidelberg Road



## Heidelberg Road - north side - looking west from Arthur St



## Heidelberg Road - looking NE near the corner of Westgarth Street







NW corner of Westgarth Street and Heidelberg Road - looking NE





## Residential interface - Austin Street looking NW



## SE corner of Austin St and Heidelberg Road





## Precinct 3 - Heidelberg Road Neighbourhood Activity Centre

Heidelberg Road - south side - between Coate Avenue and Chandler Highway





Intersection of Heidelberg Road and Chandler Highway - looking south to former mill buildings



Heidelberg Road - junction with Grange Road - looking NW to apartments





Heidelberg Road - north side - looking east at Clive Street



Heidelberg Road - looking west - north side at corner of Harker Street





Heidelberg Road - looking SE to corner of Park Avenue - Post Office left distance



Heidelberg Road - Post Office - south side





Heidelberg Road - north side - just east of Harker Street



Heidelberg Road - looking west - north side at Dan Murphy exit





Heidelberg Road - looking SW at the corner of Yarralea Street



Arbor Street - looking south - Dan Murphy entrance and car park





Corner of Miller Street - Heidelberg Rd



Looking west along footpath - Yarralea St



Heidelberg Road - North side - looking west near Harker Street - footpath and off-street parking

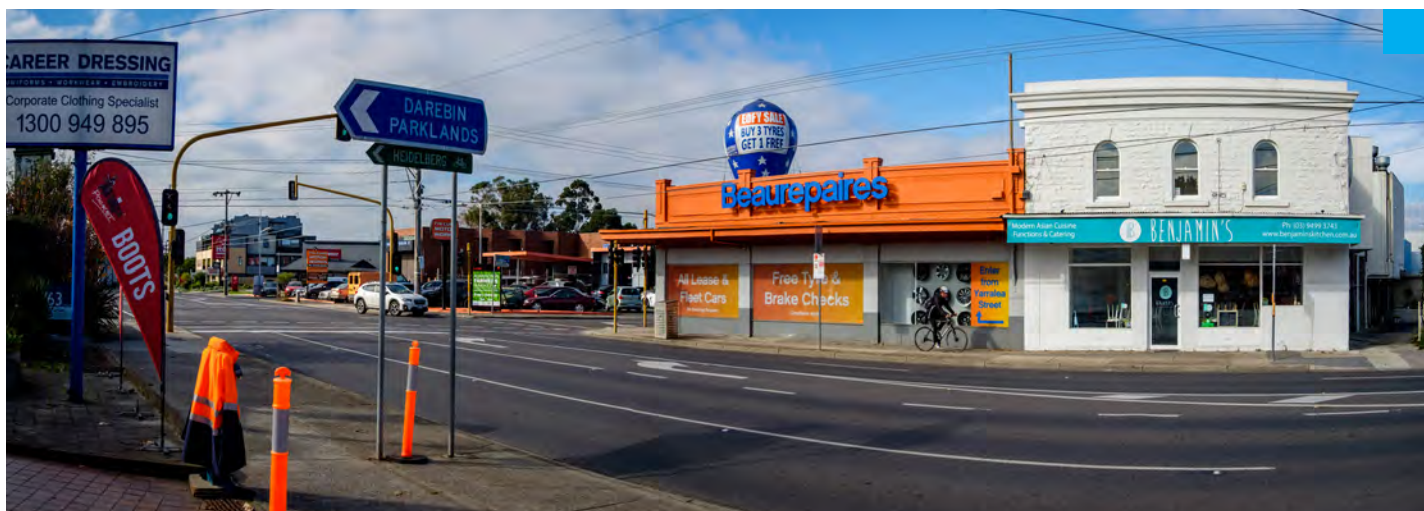




Heidelberg Road - north side looking west at Miller Street - cafe abd residential interface



Heidelberg Road - north side - looking SE to the corner of Yarralea Street - shops and streetscape



Heidelberg Road - looking SE near from near Yarralea Street - Red Rooster and large setbacks





Yarralea Street - just south of Heidelberg Road - looking west - residential interface



Miller Street - looking south to Heidelberg Road - street trees and street landscape

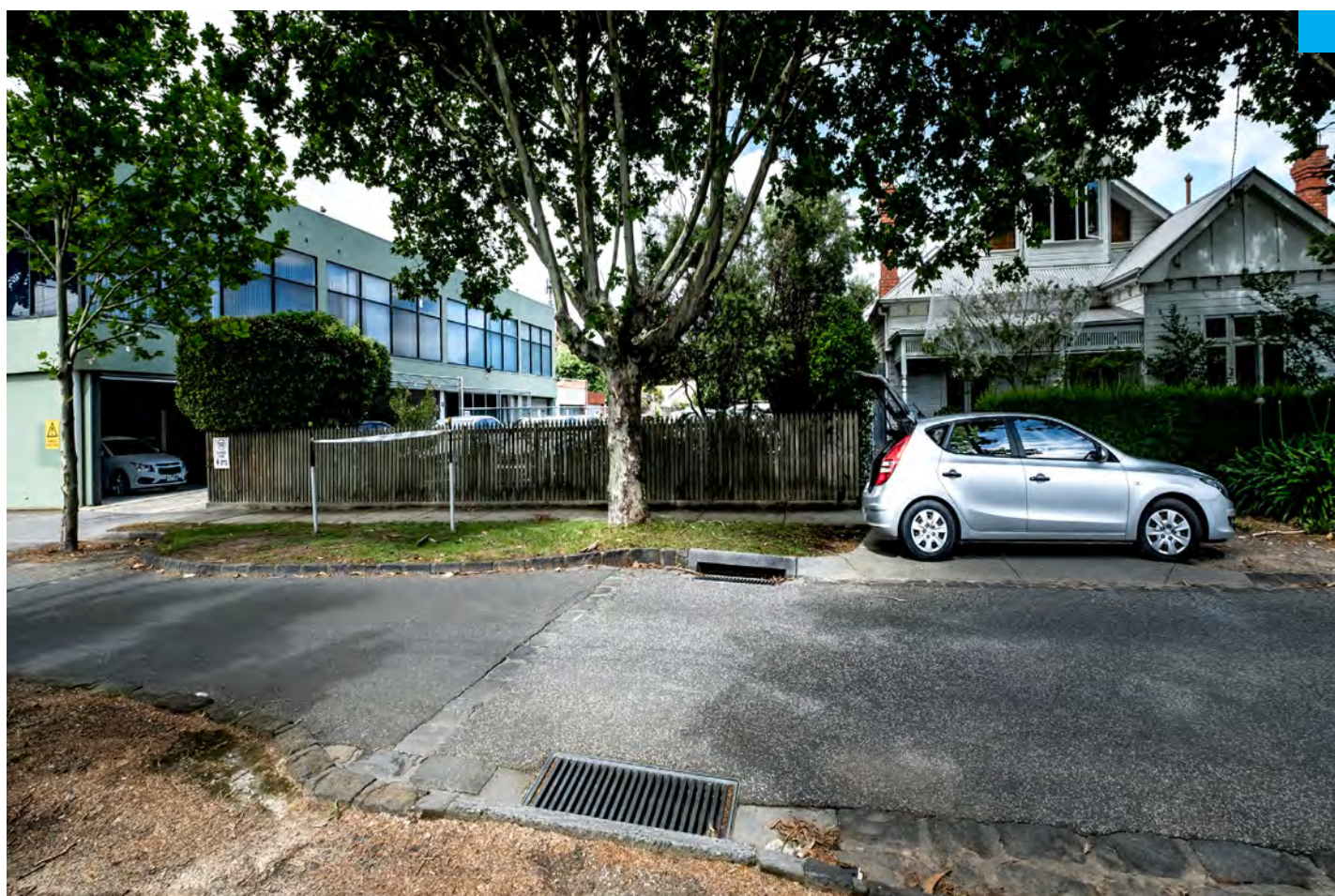




Looking west along modified lane from Miller Street - just north of Heidelberg Road



Park Avenue - south of Heidelberg Road - looking east - residential interface





Alphington Park - oval looking SW to Alphington Mill redevelopment



Alphington Park - Bowling Club - looking SW to Alphington Mill redevelopment





## Parkview Road - new apartments facing Alphington Park



## Alphington Park - grandstand at oval











# HEIDELBER ROAD CORRIDOR

## Photographic Survey