

# Site Location



AERIAL IMAGE  
September 2019



SITE  
14 Reid Street, Fitzroy North  
300m2



# Consultation Feedback

November/ December 2019

We received a total of 433 responses to the question 'what would you like to use the new park for ?'

These are listed in order of preference -

- Lying in the shade of a tree
- Sitting and reading a book
- Growing Herbs or Veggies for eating
- Having a picnic with friends
- Watching & listening to native birds
- Walking my dog on lead
- Eating lunch on a break from work or study
- Practicing Tai Chi or Yoga
- Playing with my friends

Running on the grass

Respondents could also make other suggestions

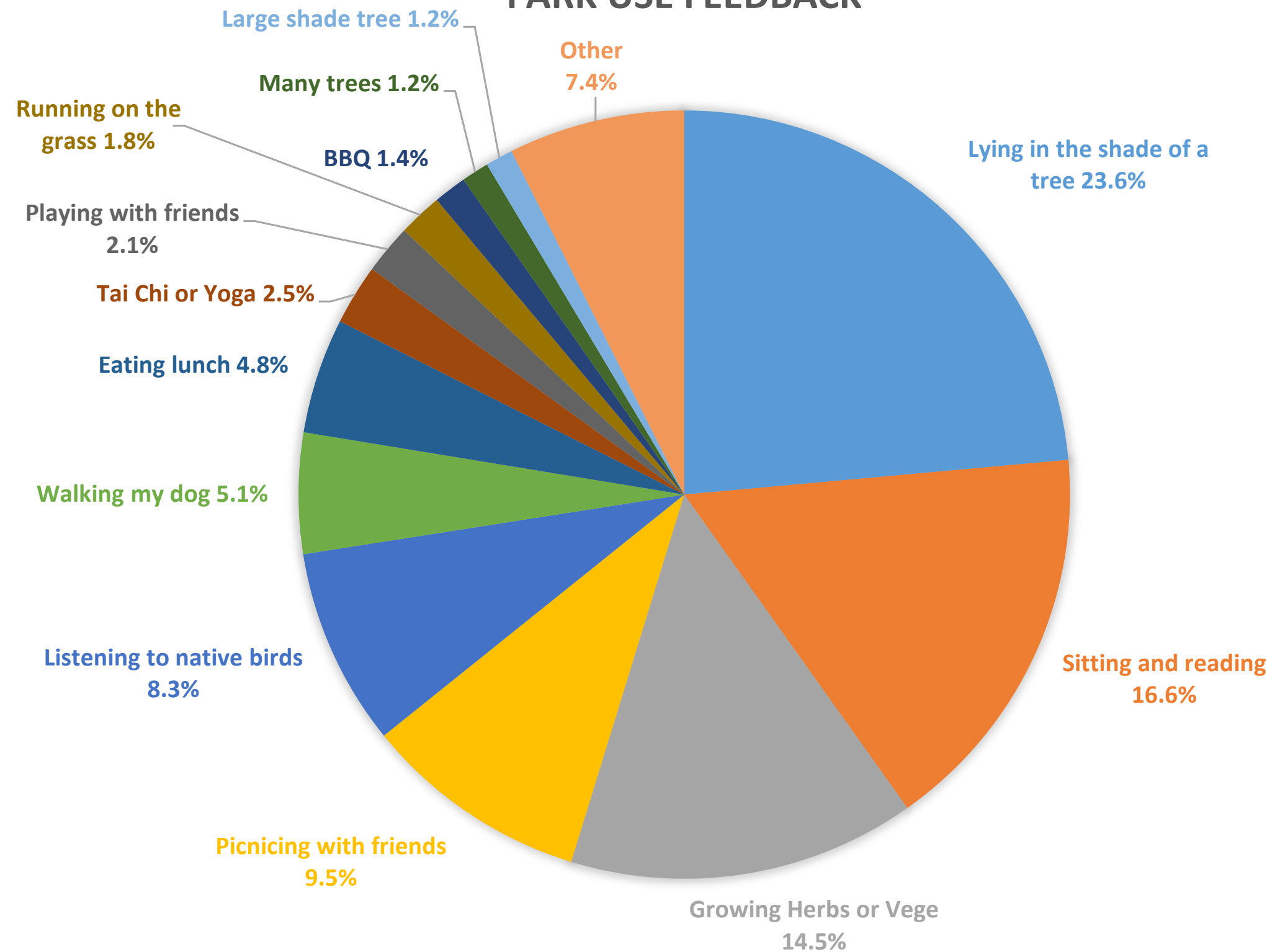
- Install a BBQ
- Plant 'lots of trees'
- Have a large shade tree

'Other' category (<1%)

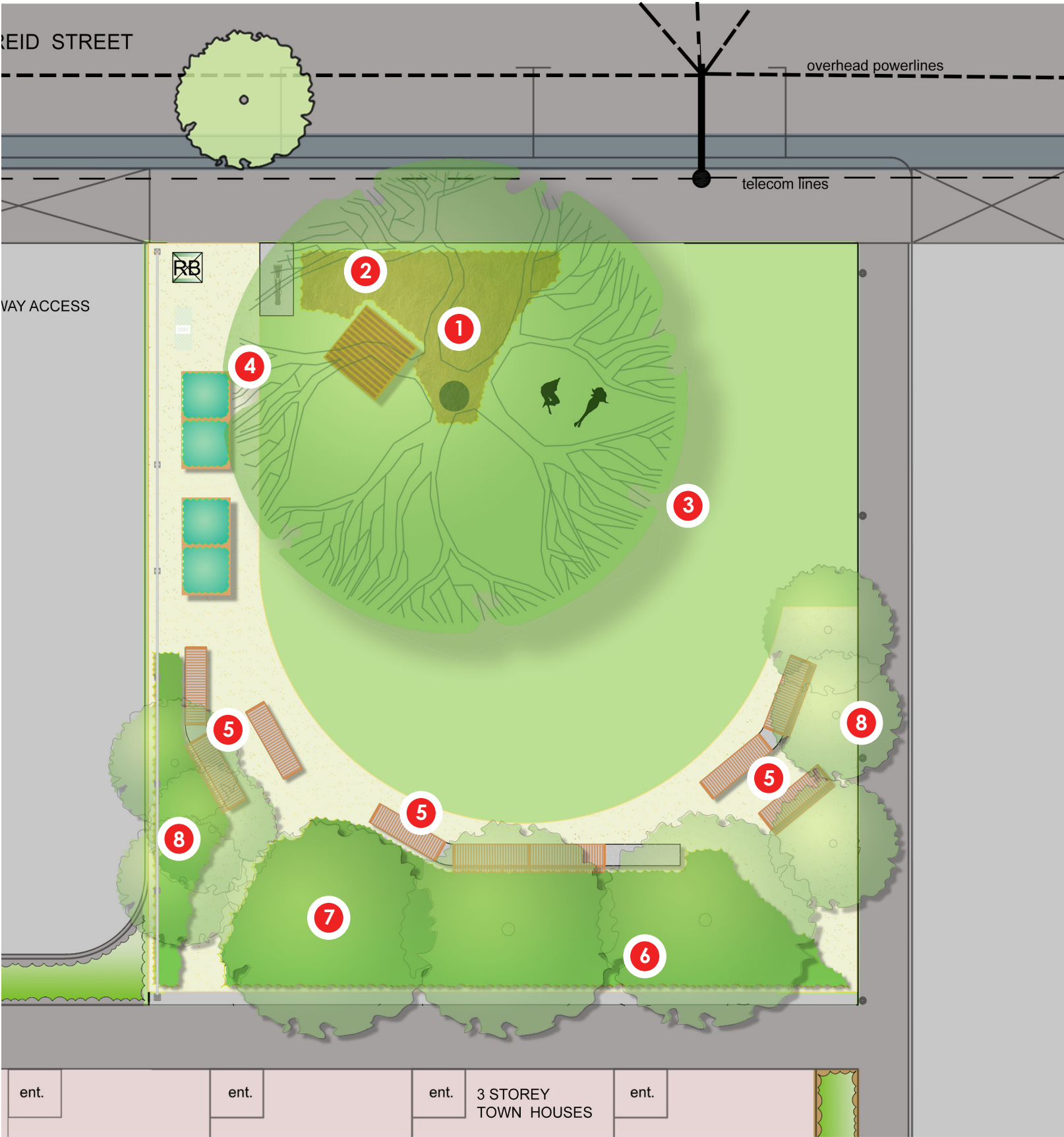
- Native flowers / bees
- Table tennis/ Adult play
- Fenced for kids
- Compost bin for apartments
- Kids playground
- Fenced for dogs
- Group fitness
- Keep unfenced
- Dog free zone
- Dense bush
- Passive green space
- Bike repair
- Sunbathing
- Playing Cricket
- Bin with dog bags

Reid street park, Fitzroy North  
Landscape Concept Design

## PARK USE FEEDBACK



# Concept plan



## REID STREET DESIGN ELEMENTS

- 1 Feature tree for shade, sitting and picnicing under
- 2 Native grass / flower garden bed
- 3 Lawn area for play and picnicing
- 4 Raised planter boxes for growing herbs & vegies
- 5 Wall seating for reading, eating lunch, resting.
- 6 Native flowering garden bed - low insect & bird attracting plants.
- 7 South tree border to provide filtered screening for town-houses - native bird attracting trees.
- 8 Tree grove - native bird attracting trees.

Reid street park, Fitzroy North  
Landscape Concept Design